

Title: Microbial residence time is a controlling parameter of the taxonomic composition and functional profile of microbial communities

Running Title : Microbial residence time effects on community

Authors: Cresten Mansfeldt^{1*}, Stefan Achermann^{1,2*}, Yujie Men³, Jean-Claude Walser⁴, Kris Villez⁵,
Adriano Joss⁵, David R. Johnson⁶, Kathrin Fenner^{1,2,7}

*These authors contributed equally to this work

1. Department of Environmental Chemistry, Swiss Federal Institute of Aquatic Science and Technology,
Eawag, Überlandstrasse 133, 8600 Dübendorf, Switzerland

2. Institute of Biogeochemistry and Pollutant Dynamics, ETH Zürich, 8092 Zürich, Switzerland.

3. Department of Civil and Environmental Engineering, University of Illinois, 205 N. Mathews Ave.,
Urbana Illinois 61801, USA

4. Department of Environmental Systems Science, Genetic Diversity Centre, ETH Zürich,
Universitätstrasse 16, 8006 Zürich, Switzerland

5. Department of Process Engineering, Swiss Federal Institute of Aquatic Science and Technology,
Eawag, Überlandstrasse 133, 8600 Dübendorf, Switzerland

6. Department of Environmental Microbiology, Swiss Federal Institute of Aquatic Science and
Technology, Eawag, Überlandstrasse 133, 8600 Dübendorf, Switzerland

7. Department of Chemistry, University of Zürich, Winterthurerstrasse 190, 8057 Zürich, Switzerland

Keywords: Diversity, richness, microbial residence time, taxonomic profiling, functional profiling, RNA
sequencing, Monod kinetic modelling, activated sludge

Abstract:

A remaining challenge within microbial ecology is to understand the determinants of richness and diversity observed in environmental microbial communities. In a range of systems, including activated sludge bioreactors, the microbial residence time (MRT) has been previously shown to shape the microbial community composition. However, the physiological and ecological mechanisms driving this influence have remained unclear. Here, this relationship is explored by analyzing an activated sludge system fed with municipal wastewater. Using a model designed in this study based on Monod-growth kinetics, longer MRTs were shown to increase the range of growth parameters that enable persistence, resulting in increased richness and diversity in the modelled community. In laboratory experiments, six sequencing batch reactors treating domestic wastewater were operated in parallel at MRTs between 1-15 d. The communities were characterized using both 16S ribosomal RNA and non-target messenger RNA sequencing (metatranscriptomic analysis), and model-predicted monotonic increases in richness were confirmed in both profiles. Accordingly, taxonomic Shannon diversity also increased with MRT. In contrast, the diversity in enzyme class annotations resulting from the metatranscriptomic analysis displayed a non-monotonic trend over the MRT gradient. Disproportionately high abundances of transcripts encoding for rarer enzymes occur at longer MRTs and contribute to the disconnect between taxonomic and functional diversity profiles.

Introduction:

Environmental microbial communities often house a rich and diverse set of species and expressed enzymes^{1,2}. A remaining challenge within microbial ecology is to understand the mechanisms driving the differences in metabolic and taxonomic diversity between communities³. Of the influencing mechanisms, the microbial residence time (MRT; the average amount of time a microorganism resides in a system) has been postulated to be a key parameter influencing microbial diversity^{4,5}. Recent investigations in engineered systems showed that as MRT increases, the diversity and richness of the community increases as well. However, specific studies exploring the relationship between MRT and community composition

51 have shown opposing or more confounded trends^{6,7} (albeit with differing experimental setups and analysis
52 methods), suggesting that the relationship between MRT of a system and community composition is
53 complex. The influence of MRT is also relevant in natural⁸ and host-associated systems⁹ suggesting that
54 more clearly identifying the influence of this parameter on community composition in engineered
55 environments may provide insights that are also relevant to other systems.

56
57 In addition to the influence on taxonomic diversity and composition, communities also express
58 more functions at longer MRT⁴. In wastewater treatment, functions related to substrate transformation
59 have been demonstrated to emerge at longer MRT, e.g., nitrification and the biotransformation of trace
60 organics^{10,11}. In a survey of 10 wastewater treatment plants, functional richness was positively associated
61 with taxonomic richness, and both parameters were in turn positively associated with plant performance in
62 terms of trace organic contaminant removal¹². By contrast, additional studies have noted that expressed
63 functional richness and diversity may not be directly related to taxonomic parameters¹³⁻¹⁵. In streams¹⁶,
64 forests^{17,18}, and host associated communities¹⁹, the monitored functional signals were independent of the
65 parameters controlling the taxonomic profiles. Both the taxonomic and functional profiles must be
66 monitored to understand further the linkage between community structure and function and to characterize
67 more accurately the influence of an external variable (such as MRT) on the community²⁰.

68
69 In this study, the influence of the MRT on the observed taxonomic composition and functional
70 profile of microbial communities cultivated in six parallel lab-scale sequencing batch reactors (SBR)
71 treating domestic wastewater was explored experimentally and described using a Monod-model.
72 Wastewater bioreactors provide a controllable experimental system²¹ with available established
73 computational models²²⁻²⁴ that have provided previous insights into microbial ecological concepts
74 including novel niches and community assembly¹³. Experimentally, the microbial communities were
75 monitored using 16S-ribosomal RNA (rRNA) and messenger RNA (mRNA) metatranscriptomic non-
76 target sequencing. Recently, 16S-rRNA sequencing has become an established method for analyzing

bacterial communities^{25,26} in biotechnological applications, with detailed sample preparation and data-processing pipelines available²⁷. To complement the taxonomic survey, mRNA sequencing (RNAseq) was performed to determine the functional profiles of the communities, for which Enzyme Commission (EC) numbers were used as a proxy for an expressed function. Numerically, Monod growth kinetics were employed in a simplistic MRT-diversity model to provide a concrete mechanistic basis for the connection between the MRT and the community composition within the SBR. This model uniquely investigates the underlying available range of growth parameters that result in persistence within the community. Organisms must survive through substrate-rich and –poor conditions within the SBR, suggesting the main tradeoff in survival strategies available to the organism is the ability to capture resources versus the ability to withstand starvation. Therefore, individual distinctive combinations of the maximum growth rate (μ_{\max}) and endogenous decay rate (b_e) are modelled and considered to be bounded in an ecological range of permissible values. Critically, allowing b_e , a parameter that has been previously shown to be species-specific²⁸, to vary between community members allows for the coexistence of multiple μ_{\max} values within a given community. This novel approach permits observing how the MRT, the independent factor in the model, influences the available set of μ_{\max} and b_e values. This simplified view of community composition leads to a better conceptual understanding of the influence of the MRT on the richness and diversity of microbial communities in the studied system.

Materials and Methods

Activated Sludge Reactor Configuration

Briefly, six automated sequencing batch reactors (6×12 L) treating local municipal wastewater after primary clarification were operated in parallel at MRTs of 1, 3, 5, 7, 10, or 15 days (d) as detailed previously²⁹ and summarized in Supplemental Table 1. Forty-eight days (time-point 1; TP1) and 187 days (time-point 2, TP2) after start-up, activated sludge samples were collected for DNA (at the start of the previously described biotransformation experiment²⁹) and RNA (5 hours after the start of the experiment) extraction.

Sample Collection

To collect samples, culture (two 20-mL samples for TP1 and a 20-mL and 40-mL sample for TP2 for DNA and RNA analysis, respectively) was withdrawn and centrifuged at $3,345 \times g$ for 10 min at 4°C. The supernatant was then discarded and the pellets were stored at -80°C until further processing.

DNA/RNA Isolation

The total RNA and genomic DNA isolation protocol consisted of a phenol:chloroform:isoamylalcohol extraction followed by either a DNA PowerCleanup PRO Kit (Qiagen, Venlo, Netherlands) or MoBIO RNA Pro Clean-Up Kit (MoBio, Carlsbad, CA, USA) and purification with a TURBO DNase step (ThermoFisher Scientific, Waltham, MA, USA) as detailed in the Supplemental Materials and modified from Johnson et al. 2015. The RNA pellet was re-suspended with diethyl pyrocarbonate (DEPC) treated RNase-free water to a total volume of 50 μ L. DNA samples were quantified on a Qubit (Invitrogen, Waltham, MA, USA) analyzer following the manufacturer's instructions, whereas RNA samples were quantified on a Nanodrop (Invitrogen) and quality-checked on a Bioanalyzer 2000 (RNA 6000 kit; Agilent Technologies, Santa Clara, CA, USA).

16S Library Preparation and Sequencing

In preparation for the 16S sequencing, The total RNA was reverse transcribed into complementary DNA (cDNA) using the Superscript III Kit (Invitrogen) with random hexamer primers following the manufacturer's instructions. The genomic DNA (gDNA) was used directly after the purification described above.

The 16S-rRNA or -rDNA amplicon library preparation followed a standard procedure for the Illumina MiSeq platform (Illumina, San Diego, CA) that is detailed in Supplemental Materials 1. Two sets of 16S-rRNA primers (Integrated DNA Technologies, Inc., Skokie, Illinois, USA) were used in this analysis to amplify the sample cDNA and gDNA to account for the potential for the bias of a single primer-set³⁰. The details of primers B1 and B2 are provided in Supplemental Table 2. The samples were sequenced using the PE 300 method on a MiSeq platform (Illumina) at the Genomics Diversity Centre at ETH Zurich, Switzerland. The raw data is publically available at EMBL-EBI under the study number PRJEB22087. The read count per sample and associated rarefaction curves are presented in Supplemental Figures 1 and 2, respectively.

16S rRNA and rDNA Sequencing Data Processing and Analysis

The raw data was checked for quality using FastQC³¹ v0.11.2. The reported nucleic sequence of the reads was then trimmed using PRINSEQ-lite³² v0.20.4 to a length of 295 bp and merged using USEARCH³³ v8.1.1756 (with a minimum overlap of 15 bp, minimum merge-length of 100, and a maximum error of 5 bp). The primers were trimmed from the merged read using cutadapt³⁴ v1.5 with wildcards allowed, a full-length overlap, and an error rate of 0.01. The reads were then filtered using PRINSEQ-lite with an amplicon range of 431-506 and 252-254 for B1 and B2, respectively, a minimum quality mean of 15, and no ambiguous nucleotides allowed. USEARCH was employed to denoise the reads into exact sequence variants (ESVs; zero-level operational taxonomical units, ZOTUs using UNOISE3) and assign taxonomic origin (using usearch_global, 70% identity against the SILVA 16S

database (release 128), followed by syntax with a 70% identity cutoff). The total number of raw and cleaned reads per sample for the B2 primer ranged from 59,311-191,897 with a median of 113,347 and 54,864-185,331 with a median of 104,537, respectively (the details for every sample are provided for primers B1 and B2 in Supplemental Tables 3 and 4, respectively). In total, 99.3% of these reads were binned into 10,644 ESVs, with 2,918 ESVs displaying more than 10 reads in at least one sample. Primer B2 is considered in the main text because more positive and negative controls were analyzed for B2 than B1.

The resulting data was then analyzed in R v3.5.1 using phyloseq³⁵ v1.24.2 as detailed in Supplemental File 1. The bacterial 16S richness (0D ; on rarefied data to remove potential sampling effort effects) and Shannon diversity index ($\ln({}^1D)$; on non-rarefied data) were calculated as n and $\exp(-\sum_{i=1}^n p_i * \ln(p_i))$, respectively, where n is the number of ESVs and p_i is the abundance-weighted proportion of ESV i ³⁶⁻³⁸. When relating metrics throughout this study, Spearman rank-correlation (denoted as r) analyses were employed to avoid imposing assumptions of linearity.

RNAseq Library Preparation and Sequencing

The RNA samples were processed into libraries and sequenced following the Illumina TruSeq Single-End-Read 150 bp pipeline of the Genomics Facility at the University of Basel. In brief, the abundant ribosomal sequences in the samples were degraded to enhance the mRNA fraction using the Ribo-Zero Gold Epidemiology Kit (Illumina) to target Eukaryotic, Bacterial, and Archaeal sequences. During testing, this Epidemiology Kit was found to outperform a sequential application of the Ribo-Zero Gold Bacterial and Eukaryotic Kits (Illumina) on the activated sludge samples (81.3±5.2% versus 15.4±1.8% of resulting reads of non-rRNA origin). The adapter addition, sample cleanup, and fragment selection were performed as outlined in the Illumina TruSeq protocol. The samples were then sequenced on a NextSeq 500 Platform (Illumina pipeline 2.4.11). The raw data are publically available at EMBL-EBI

under the study number PRJEB22087. The quality of the RNA as extracted, RNA after depletion, and resulting fragments are provided in Supplemental Figures 3-5.

RNAseq Data Processing, Normalization, and Analysis

The raw read files were trimmed of adapter sequences, index sequences, and low quality reads using Trimmomatic³⁹ v0.33. The raw and trimmed reads were also checked for quality using FastQC³¹ (Supplemental Figure 6-9). To remove contaminating rRNA reads *in silico*, the trimmed reads were compared against rRNA databases (Silva version 119 (Bacteria 16S & 23S, Archaea 16S & 23S, Eukaryote 18S & 28S) and RFAM (5S & 5.8S)) and filtered using SortMeRNA⁴⁰. Sequences passing the quality control were annotated with the descriptors provided in the Enzyme Commission (EC) Number Uniprot database using DIAMOND⁴¹ v0.2.1 with the blastx command and a minimum bitscore cutoff of 50 (all other parameters set to their default). Because we are primarily investigating EC annotation that can be shared across taxa and not specific genes from individual species, only the best annotation per read was recorded. The full Uniprot-TrEMBL database was created by downloading the database on March 6th, 2018 (36.8 billion amino acids in 109 million sequences). The narrower Uniprot-EC database was created by searching for ec:* and downloading all matching hits on March 6th, 2018 (5.8 billion amino acids in 14.9 million sequences). The script required to process the raw RNAseq files, generate the database, annotate the reads, and extract the taxonomic Uniprot identifiers is provided as Supplemental File 2. The resulting raw sequencing files contained 41.8-54.4 million reads, of which 72.5-87.7% remained in the dataset after quality and rRNA filtering. In total, 32.8-47.7 million reads per sample were submitted for annotation, resulting in 5.1-9.8 million reads being annotated per sample (Supplemental Table 5; Supplemental Figures 10-11).

The read counts were aggregated per EC number, and these EC numbers were used as a proxy of the functional profile in this study. When the Uniprot entry that provided the annotation of a read maintained multiple EC numbers, the read was assigned equally to each EC number (<5% of all

annotations maintained multiple EC designations). The rarefaction curves showed that the richness of EC numbers saturated within the library's sequencing depth (Supplemental Figure 12). For normalization, the count data was treated compositionally in that the abundance of a specific EC number was divided by the total number of reads identified to encode a protein. The total number of protein encoding reads was determined by first using 500 k reads from each library to search against the full Uniprot-TrEMBL database and then multiplying the fraction annotated with the total number of reads submitted to the Uniprot-EC database (Supplemental Table 5; Supplemental Figure 13).

MRT-Diversity Model Construction

i. MRT-Diversity Model Approach, Assumptions, and Limitations

In the MRT-diversity model, Monod-type bacterial growth mathematics⁴² were employed dynamically to approximate the linkage between the MRT and community composition in the experimental reactor (Figure 1.a). Monod-kinetics use the μ_{\max} , b_e , substrate affinity (K_s), and yield (Y) to describe the growth of an organism's biomass (X) on a given substrate (S). The approach presented here utilizes these parameters in a novel manner by exploring the range of their combined values (an approximation of community diversity) that leads to persistence over a MRT gradient.

In our approach, we apply a number of simplifications to typical considerations employed in other Monod-growth based dynamic models²⁴ to determine the range of growth parameters leading to persistence. Specifically, the wastewater is considered a single substrate (e.g., no distinction of carbonaceous or nitrogenous compounds), growth limitations resulting from sources other than substrate availability are considered constant (e.g., mass transfer, toxic product formation, additional substrates), and competition is allowed only for this single substrate. When triggered, assigned flow rates and influent composition are also assumed to be temporally stable to remove variability resulting from other independent variables, and mixing within the reactors is considered perfect (except during the settle phase). Changes in steady-state growth depend only on the maximal gene expression and enzyme kinetics,

and the availability of the enzyme pool is considered temporally stable thereby neglecting evolution. In turn, this stability is assumed to allow instantaneous adjustments of the growth rate to the change in the substrate concentrations (i.e., time lags have elapsed).

To capture competition over both substrate-rich and –poor phases, individuals within this model are allowed to be distinct in two growth parameters only: μ_{\max} and b_e . Both internal (consumption of stored substrate) and external (adverse environmental conditions, cell programmed death, and viral attack) decay are considered incorporated in the b_e parameter⁴³; higher order ecological considerations dependent on the consideration of additional substrates such as predation and growth on lysis products are excluded from the model. The maximum and minimum μ_{\max} and b_e values are bounded by ecological limits, and a constraining combination of growth parameters must be satisfied by the range. In summary, the main uncertainties in the model include the appropriateness of restricting the analysis to a single substrate, the placement of the constraining growth parameters, the uncertain assignment of the ecological constraints, and the exclusion of other contributors to diversity such as population oscillation and the time to reach equilibrium⁴⁴.

ii. *Role of μ_{\max} and b_e in the MRT-Diversity Model*

To conceptualize the interaction of the μ_{\max} , b_e , and MRT within the MRT-Diversity model of a SBR, the solution for the minimum substrate concentration (S_{\min}^*) that leads to persistence in a continuously stirred tank reactor⁴⁵ (Supplemental Materials 2) provides a simplified analogy that can be written without including differential equations:

$$S_{\min}^* = \frac{(1+b_e*MRT)}{(\mu_{\max}-b_e)*MRT-1} K_s \quad \text{Eq. 1}$$

where all parameters were defined previously. Organisms with the lowest calculated S_{\min}^* values will persist in the reactor because they will outcompete other community members for the sole resource. In previous models, a single surviving species would be selected because of the hypothesized inability of other organisms to exactly match the μ_{\max} , K_s , and b_e combination required for persistence in the reactor⁴⁵.

Notably, we relax this constraint and allow multiple organisms to grow on a single substrate. Modelling co-existing combinations of growth parameters explores whether we can predict richness and diversity values similar to the experimentally observed values over a MRT gradient.

In developing this Monod-kinetics model of multiple organisms for the investigated SBR (Figure 1.a), the combination of growth parameters that are allowed at a given MRT is simply given by the maximum and minimum μ_{\max} and b_e values that persist in the reactor to represent competition in both the resource-rich and –poor operating phases (Figure 1.b). The K_s influences the μ_{\max} values leading to persistence in the reactor less than b_e (Supplemental Figure 14) because it represents another component of resource capture rather than variations in survival during low or no production. K_s was therefore held constant to minimize model complexity. The line of growth parameter combinations that results in persistence (and determined by the equations detailed below) is required to fall within a roughly set ecological range and to pass through constraining growth parameters ($\mu_{\max, \text{constrain}}$ and $b_{e, \text{constrain}}$; values that are initially assumed to remain unchanged between reactors, arbitrarily set to the center of the range, and explored further in Supplemental Figure 15). To establish the permissible ecological values of b_e , the extremes of previously reported observations (from ~ 0.02 ^{47,48} to ~ 0.2 d⁻¹⁴⁹) were used as approximate boundaries ($b_{e, \text{eco}}$; 0.02 to 0.2 d⁻¹), and an average value (0.11 d⁻¹) was selected as the $b_{e, \text{constrain}}$ (Table 1). The $\mu_{\max, \text{eco}}$ boundaries (0.2 to 9.8 d⁻¹) were set to exceed the range of values reported for a previous MRT gradient⁵⁰, and an average value of 5 d⁻¹ was selected as the $\mu_{\max, \text{constrain}}$ (Table 1). The model was found to be rather insensitive to the selection of these constraining points (Supplemental Figure 15).

iii. SBR Differential Equations

The combination of growth parameter values resulting in persistence (i.e., non-zero steady-state concentrations) across the ecological range were determined with the following system of differential equations that describes the flow, biomass, and substrate concentrations within the SBR (Figure 1.a):

$$\frac{dV}{dt} = Q_{in} - Q_{clarified\ drain} - Q_{mixed\ drain} \quad \text{Eq. 2}$$

$$\frac{dX_i}{dt} = \left(-X_i(t) * Q_{mixed\ drain}/V(t) + \left[\frac{\mu_{max,i}*S(t)}{K_s+S(t)} - b_{e,i} \right] * X_i(t) \right) \Big|_{i=1}^n \quad \text{Eq. 3}$$

$$\frac{dS}{dt} = \left(S_{in} * \frac{Q_{in}}{V(t)} - (Q_{clarified\ drain} + Q_{mixed\ drain}) * S(t)/V(t) - \sum_{i=1}^n \left[\frac{\mu_{max,i}*S(t)}{K_s+S(t)} \right] * \frac{X_i(t)}{Y} \right) \quad \text{Eq. 4}$$

where the flowrates are triggered during their respective cycles (and are zero otherwise); the i subscript indicates parameters and biomass for the i^{th} combination of growth parameters (ranging from 1 to n) that were modelled simultaneously; and all other parameters are defined in Table 1 and further described in Supplemental File 3. To ensure flow balance across the SBR cycle (Figure 1.a), the $Q_{clarified\ drain}$ is calculated to offset the Q_{in} and $Q_{mixed\ drain}$ (outflow of suspended biomass):

$$Q_{clarified\ drain} = \frac{Q_{in}*t_{in} - Q_{mixed\ drain}*t_{mixed\ drain}}{t_{clarified\ drain}} \quad \text{Eq. 5}$$

where all parameters are defined in Table 1. Notably, the MRT is determined as the full volume of the reactor divided by the total volume of suspended biomass removed ($Q_{mixed\ drain}*t_{mixed\ drain}$) per six cycles (one day).

An iterative approach was used to calculate the μ_{max} values resulting in persistence for nine b_e values distributed across the ecological range. A full solution line was then fit to these nine points (Figure 1.b). This solution line was found to depend only on those parameters directly influencing μ_{max} , b_e , and MRT and was insensitive to changes in other global parameters such as the S_{in} , Y , and K_s . All differential equations mentioned in this study were analyzed using deSolve⁵¹ v1.21, and all calculations were performed in R v3.5.1 (Supplemental File 3).

iv. *MRT-Diversity Model Alpha Diversity Calculation*

After determining the solution (Figure 1.b), the length of the line representing all combinations of μ_{max} and b_e leading to survival within the reactor was then calculated:

$$\text{Growth Parameter Solution Length} = \sqrt{\left(\frac{\mu_{max,max} - \mu_{max,min}}{\mu_{max,eco,max} - \mu_{max,eco,min}} \right)^2 + \left(\frac{b_{e,max} - b_{e,min}}{b_{e,eco,max} - b_{e,eco,min}} * \text{Scaling Factor} \right)^2} \quad \text{Eq. 6}$$

where the Scaling Factor is set to 0.25 to represent a case when the μ_{max} range contributes more to the length than the b_e (emphasizing the fact that b_e serves more to allow the coexistence of different μ_{max}

300 values rather than contribute to diversity directly; see Supplemental File 3). The growth parameter
301 solution length is utilized as a proxy for the richness of a community; this length will most likely be an
302 underestimate of true richness as a result of binning organisms (or ESVs when comparing to 16S data) that
303 display the identical combination of growth parameters. The Shannon diversity index was determined by
304 numerically solving differential equations for the steady-state biomasses ($X_i(\text{steady-state})$) when
305 considering the number of distinct combinations of growth parameters within the community to be the
306 length of the range multiplied by a constant value ($n = 50$; discretionarily set to achieve an integer value
307 representative of community size and a timely computation of the differential equations). The
308 instantaneous substrate utilization rate (k_{theo}) was calculated as the maximum substrate utilization rate
309 determined at the beginning of one cycle.

Results and Discussion:

Observed Taxonomic Richness and Diversity Increases with MRT

The ESV richness increases monotonically across the MRT gradient for the active community members, i.e., the 16S rRNA (Spearman rank correlation $r = 0.98$ and 0.89 for TP1 and TP2, respectively), but displays a lower correlation to a monotonic trend for the present community members, i.e., the 16S rDNA ($r = 0.81$ and 0.77 for TP1 and TP2, respectively)(Figure 2.a & b). Additionally, the abundance weighted diversity metric, the Shannon diversity index, shows a decelerating increase in the rRNA transcripts which levels off above 5.1. Overall, the observed increase in the Shannon diversity value between 3 to 10 d (i.e., a mean \pm s.d. of 4.6 ± 0.27 to 5.3 ± 0.20 , respectively) agrees with a previous study investigating lab-scale synthetic wastewater-treating membrane bioreactors (MBRs)⁵². Other studies utilizing synthetic wastewater indicated no substantial difference between the community diversity metrics at ~2 and 10 d MRT in a MBR system^{6,7}, or a decrease in diversity from 3 to 8 d MRT in a SBR system⁵³. These studies also employed other sequencing techniques such as denaturing gel gradient electrophoresis⁷ and terminal restriction length polymorphism analysis⁵³ that can affect the exact quantified values, but are not expected to affect the reported trends of stable or decreasing diversity metrics. By contrast, investigations of full-scale WWTPs reported a comparable increase in diversity metrics at longer MRT^{4,5,54}, suggesting that real wastewater is required to consistently display a direct MRT-diversity relationship as also observed here.

Of the fifteen highlighted orders (Figure 2.c & d), six (*Burkholderiales*, *Rhodocyclales*, *Myxococcales*, *Sphingobacteriales*, *Rhodobacteriales*, and *Pseudomonadales*) were previously demonstrated to be commonly shared by a wide variety of activated sludge^{55,56}. Across a set of 13 Danish WWTPs, genera of the *Thiotrichales* order were abundantly observed in only two WWTPs, highlighting the potential transient nature of this population in WWTPs⁵⁶. At both time-points, the relative 16S rRNA transcript abundance of *Burkholderiales* decreases by nearly a factor of two with increasing MRT (from $41.3\pm0.30\%$ to $19.6\pm0.23\%$ and $37.5\pm0.60\%$ to $21.1\pm0.15\%$ of the community for TP1 and TP2,

respectively) consistent with a previous study⁴, whereas *Rhodocyclales* (from 21.2±0.44% to 41.3±0.20% and 12.3±0.21% to 19.6±0.59%) and *Myxococcales* (from 0.11±0.30% to 12.2±0.38% and 0.14±0.01% to 5.7±0.12%) show increasing abundances. Additionally, a low abundance subpopulation capable of oxidizing ammonia to nitrate, the *Nitrosomonadales*, established at longer MRT when nitrification was noted²⁸ and expected⁵⁷.

The relative distribution of the orders are maintained in both the TP2 16S rRNA and rDNA profiles (Spearman r for the top 50 orders of 0.90, 0.88, 0.80, 0.74, 0.72, and 0.60 for 1, 3, 5, 7, 10, 15 d MRT, respectively). However, the profile in TP1 was substantially more variable (r = 0.27, 0.33, 0.47, 0.47, 0.38, and 0.25, respectively). This divergence is attributed to the detection of unique orders (*Caldilineales*, *Lactobacillales*, *Micrococcales*) and to the over-abundance of members within the *Thiotrichales* order in the TP1 rDNA profile (Figure 2.c). This over-abundance suggests that the filamentous *Thiotrichales* in TP1 causes a negative selection event in those reactors in which the most dominant organism by biomass (rDNA) is not the most active or productive (rRNA)⁵⁸. This more variable signal also results in the *Nitrosomonadales* order displaying a 10- to 100-fold lower rDNA than rRNA signal (Figure 2.c and d), obscuring the ability to detect the known MRT-dependent emergence of this organism and its causal relationship to nitrification⁵⁹. Overall, the 16S results suggest that the expression of 16S rRNA is more reflective of activity than the detection of an organism (16S rDNA) in the activated sludge experiments, supporting previous findings in surveys of other aerobic systems⁶⁰.

MRT is a Driver of Modeled Taxonomic Richness and Diversity

In the constructed MRT-diversity model, increasing the MRT expands the range of combinations of μ_{\max} and b_e values that lead to persistence (Figure 1.b; Supplemental Table 6). Strikingly, the increase in the range of growth parameters (Figure 3.a) strongly correlates with the 16S rRNA observed richness (Figure 2.a and b) with r-values of 0.98 and 0.89 for TP1 and TP2, respectively (Figure 3.a inset). In terms of previously developed theories of microbial ecology, reducing the community complexity into tradeoffs

between parameters that describe resource capture and represent survival during low-production (μ_{\max} and b_e , respectively; components of the Competition-Stress-Ruderal continuum^{61,62}) recaptures the trend of increasing richness across the MRT range for the SBR. When utilizing a variable parameter that is independent of the substrate concentration (b_e), the maximum effect resulting from the difference in ability to withstand low-production occurs when no substrate is present, a critical component to capture in the dynamic model of SBRs. By comparison, when considering only variation in the parameters describing resource capture (μ_{\max} and K_s ; components of the r/k-specialist model⁶³; Supplemental Figure 14), the influence of both μ_{\max} and K_s diminishes as the substrate concentration approaches zero, challenging the applicability of the resource-capture-only framework in SBR systems with extended react phases.

Although a range of growth parameters will persist (Figure 1.b), the organisms they represent will be present at various abundances at steady-state (X_i in Figure 1.c). The Shannon diversity for the SBR shows a decelerating increase with MRT (Figure 3.b), matching the 16S rRNA observed data ($r = 0.97$ and 0.74 for TP1 and TP2, respectively (Figure 3.b inset)). An underlying assumption in this comparison is that the ratio of the biomass resulting from a given combination of growth parameters to the number of representative rRNA transcripts is constant; however, this ratio varies even at the gene copy per genome level⁶⁴. Therefore, the general trend of the curve is informative of whether the MRT influences the diversity, but the magnitude of the shifts would be substantially affected by this rRNA-to-biomass ratio.

The substrate consumption rate of the entire activated sludge community is often monitored through respirogram bulk tests (i.e., biomass normalized maximal oxygen uptake rate (OUR) analyses)⁶⁵ and has been previously reported to slow with increasing MRT^{50,66}, suggesting an adaptation of the community. Our model allows predicting the instantaneous substrate utilization rate (k_{theo}), and the previously published slowing trend is not observed from the initial default parameters (modelled k_{theo} of 5.0 and 5.8 d^{-1} at 1 and 15 d , respectively). This disconnect likely stems from underlying assumptions of our model, most notably fixing constraining central growth parameters ($\mu_{\max, \text{constrain}}$ and $b_{e, \text{constrain}}$).

However, when using $b_{e,ecomax}$ as $b_{e,constrain}$ instead, the decreasing trend in the previously reported empirical values is successfully mirrored (k_{theo} of 4.8 and 4.1 d^{-1} at 1 and 15 d, respectively) while the diversity profiles are conserved. Therefore, ambiguity remains regarding the accurate placement of these controlling parameters as well as the ecological range parameter values.

Overall, these observed and modelled results complement a previous study monitoring an activated sludge reactor for 313 days in a 30, 12, 3, 30 d MRT disturbance cycle, in which an increased diversity was noted for the higher MRT values^{4,67}. In that study, two mechanisms were proposed that contribute to the higher richness and diversity: decreases in unconsumed resources (analogous to decreases in the S^*_{min} in Eq. 1 or an increase in the length of the starvation phase in the SBR) and increases in niche space (represented by the range of growth parameters and assumed to represent the richness in the MRT-diversity model). Our model uses the MRT and growth parameters to represent these two mechanisms in separate equations and predicts that the richness increases as the availability of unconsumed resources decreases across the observed MRT range (Figure 3). Notably, the MRT-richness profile can display a non-monotonic trend at higher MRT or by placing the constraining growth parameters ($\mu_{max,constrain}$ or $b_{e,constrain}$) close to the ecological limits. By contrast, the availability of unconsumed resources will consistently decrease with increasing MRT. Notably, observing a non-monotonic MRT-richness relationship would suggest that niche space contributes more to diversity. In future studies, the potential for this non-monotonic profile should be tested by establishing reactors exceeding the maximum MRT observed here (Figure 2.a and b). Additionally, uncovering a transition from a monotonic to non-monotonic MRT-richness relationship would assist in testing the underlying assumptions of the model and more accurately estimating the ecological ranges and constraining growth parameters.

Observed Functional Richness, but not Diversity, Increases with MRT

With increasing MRT, conceptually either an organism absent at lower MRT may occupy the additional growth parameter space or a shared microorganism across MRT expresses different functional enzymes. To test for shifts in the functional profile, the metatranscriptomes of the experimental communities were sequenced, annotated as EC numbers, and analyzed using alpha diversity indicators of the number of unique (richness) and evenness of the relative abundance (Shannon diversity index) of the EC sub-subclasses and numbers (Figure 4). Similar to what was noted in a previous study, the 16S rRNA taxonomic and EC number richness of both time-points display a strong correlation ($r = 0.98$ and 0.97 for the TP1 and TP2 samples, respectively)¹² and a nearly monotonic increase with MRT in richness (Figure 2.a and b; Figure 4). This relationship between the taxonomic and functional richness is not as consistently strong with the 16S rDNA ($r = 0.81$ and 0.94 , respectively). These results again highlight that a measure more reflective of current activity within the cell (16S rRNA) links better with the overall functional profile (mRNA) than a survey of presence alone (16S rDNA). When considering the relative abundances of a given EC sub-subclass or number, the Shannon diversity displays a non-monotonic profile, contrasting the taxonomic profiles and the EC sub-subclass or number richness. This disconnect between taxonomic and functional diversity has been previously demonstrated in model wastewater reactors¹³, suggesting that this result represents a true signal beyond simple limitations with the 16S rRNA measure (e.g., abundance not always correlating with growth rate, inter-species differences in copy numbers per cell⁶⁸, steep ecological gradients across the SBR cycle). However, the disconnect between the functional richness and Shannon diversity indicates that although the quantity of EC sub-subclasses or numbers increases across the gradient, specific categories increase in dominance at longer MRTs, offsetting the increased richness (Figure 4).

The Relative Abundance Shifts of “Rare” Enzyme Classes Drive the Functional Diversity Profile

Several overrepresented EC sub-subclasses in terms of observed abundance (Figure 5.a), e.g., the 2.7.7 nucleotidyltransferase (containing 2.7.7.6 RNA-polymerase, RpoB) and 5.99.1 other-isomerase (containing 5.99.1.2 DNA topoisomerase) EC sub-subclass, decrease in their fractional share of the

metatranscriptome as the MRT increases (Figure 5.b). Simultaneously, the fractional share of sub-
subclasses that include oxidoreductases and nitrogen-processing related enzymes that are linked to the
emergence of nitrification over the MRT gradient (e.g., nitrogenous oxidoreductase with [1.7.2] and
without [1.7.99] cytochrome) increase (Figure 5.a and b). The over-abundance of nitrogen metabolism-
related gene transcripts has been previously noted in activated sludge even when nitrifiers are a minor
fraction of the community⁶⁹. Notably, these EC sub-subclasses and associated numbers that markedly
increase in abundance over the MRT induced the non-monotonic functional diversity profile, indicating
that substantially different abundances of mRNAs encoding for specific enzymes are likely required to
achieve those growth parameters resulting in persistence. The discrepancy between the non-monotonic
functional diversity profile of all EC numbers and the monotonic taxonomic diversity profile for a single
targeted transcript (e.g., 16S-rRNA) results from enzymes displaying additional properties⁷⁰ such as
specific substrates affinities, product turnover rates⁷¹, and protein-to-transcript ratios^{72,73} that affect their
relative fractional abundances.

To compare the observed diversities within each EC sub-subclass (similar to the 16S-rRNA
analysis), specific taxonomic richness and diversity values were calculated based on the putative genus-
level organism-origin annotation that each mRNA read is assigned (Figure 5.c and d, respectively).
Focusing on the aforementioned 2.7.7 and 1.7.99 sub-subclasses to highlight categories demonstrated to
be common and rare, respectively (Figure 5.c), the diversity profile of the common EC sub-subclass 2.7.7
displays a positive relationship with that of the 16S rRNA (Figure 2; $r = 0.89$ and 0.59 for TP1 and TP2
Shannon indices, respectively). In contrast, a divergent profile is seen for the taxonomic diversity of the
rare 1.7.99 sub-subclass ($r = -0.65$ and -0.76 for TP1 and TP2, respectively), indicating that select
organisms dominate the origin of the reads within this category at higher MRTs. Notably, reads from the
nitrifying *Nitrospira*⁷⁴ dominate the 1.7.99 sub-subclass. The nitrification rate intensifies across the MRT
gradient, suggesting that *Nitrospira* expressed the proper bulk-growth parameters to persist and thrive
within the community. The greater share of the overall reads transcribed resulting from a single,

nitrification-related organism contributed to the noted decrease in functional diversity of the overall community (Figure 4) .

When further binning reads into Domain-level taxonomic origin, a substantial fraction of annotations originating from Eukaryotic organisms (Figure 5.e) were noted for certain EC sub-subclasses increasing in abundance over the MRT gradient (Figure 5.a). In activated sludge, increasing MRT over the studied range have been reported to promote a higher abundance of Protozoa⁷⁵, organisms that are overlooked in bacterial-targeted taxonomic surveys of WWTPs. This signal in the mRNA data could confound the previous comparison between the taxonomic and functional diversity metrics. However, when reanalyzing the functional diversity metrics (Figure 4) for the Bacterial portion (Eukaryotic filtered), a similar profile is obtained (Supplemental Figure 19), supporting the detection of a true distinction between the taxonomic composition and the functional profile.

Conclusions

As demonstrated experimentally, increasing the MRT positively affects the taxonomic richness and diversity as well as functional richness of the monitored activated sludge community. To conceptualize these findings, a naïve model was constructed that utilized Monod-kinetics in a novel manner by considering wastewater as a single substrate and the community as a collection of growth parameter combinations. Combinations of μ_{\max} and b_e values were selected to represent the tradeoff between resource capture and survival during low production, reflecting considerations within the C-S-R description of microbial ecology. This MRT-diversity model predicted that the range of μ_{\max} and b_e values expands with increasing MRT for the studied system, suggesting a new, kinetic parameter-driven metric that correlates strikingly well with the observed taxonomic profile and the functional richness across the MRT gradient. For a new community member to occupy these opened growth parameter combinations and thereby increase the taxonomic richness, previously unobserved EC numbers are likely required because of the noted increases in functional richness. In contrast to the taxonomic abundance-weighted

diversity, the functional diversity displayed a non-monotonic trend over the MRT range. Whereas more EC sub-subclasses and numbers are detected at higher MRTs, their fractional share of the overall activity of the community varies depending on the expressed function. For example, rare sub-subclasses related to nitrification substantially increase in dominance at longer MRTs in this system. Although the complexity of the relationship between EC numbers is not successfully captured, the simplification of the community into combinations of μ_{\max} and b_e values appears to be a useful approximation for predicting changes in taxonomic richness and diversity as well as functional richness over a MRT gradient in this system. Because this study is the first to employ Monod-kinetics in this manner, future work should determine whether the approach and assumptions introduced here are valid when used to describe other systems, explore the concepts of the constraining growth-parameter combination and ecological boundary values, and subdivide influent resources into individual substrate types (e.g., nitrogen-containing compounds).

Conflict of Interest:

The authors declare no conflicts of interest.

Acknowledgements:

Data produced and analyzed in this paper were generated in collaboration with the Genetic Diversity Centre (GDC), ETH Zurich, Switzerland and the Genomics Facility at the University of Basel, Switzerland. We thank the operators and the staff of the WWTP ARA Niederglatt for providing activated sludge. We acknowledge financial support from the European Research Council under the European Union's Seventh Framework Programme (ERC grant agreement no. 614768, PROduCTS). We also thank Dr. Paola Meynet for assistance in the preparation of the 16S control libraries.

References:

1. Curtis, T. P., Sloan, W. T., and Scannell, J. W. (2002). Estimating prokaryotic diversity and its limits. *Proceedings of the National Academy of Sciences*, 99(16), 10494-10499.
2. Locey, K. J., and Lennon, J. T. (2016). Scaling laws predict global microbial diversity. *Proceedings of the National Academy of Sciences*, 113(21), 5970-5975.
3. Antwis, R. E., Griffiths, S. M., Harrison, X. A., Aranega-Bou, P., Arce, A., Bettridge, A. S., et al. (2017). Fifty important research questions in microbial ecology. *FEMS Microbiology Ecology*, 93(5).
4. Vuono, D. C., Benecke, J., Henkel, J., Navidi, W. C., Cath, T. Y., Munakata-Marr, J., et al. (2015). Disturbance and temporal partitioning of the activated sludge metacommunity. *The ISME Journal*, 9(2), 425-435.
5. Meerburg, F. A., Vlaeminck, S. E., Roume, H., Seuntjens, D., Pieper, D. H., Jauregui, R., et al. (2016). High-rate activated sludge communities have a distinctly different structure compared to low-rate sludge communities, and are less sensitive towards environmental and operational variables. *Water Research*, 100, 137-145.
6. Bagchi, S., Tellez, B. G., Rao, H. A., Lamendella, R., and Saikaly, P. E. (2015). Diversity and dynamics of dominant and rare bacterial taxa in replicate sequencing batch reactors operated under different solids retention time. *Applied Microbiology and Biotechnology*, 99(5), 2361-2370.
7. Akarsubasi, A. T., Eyice, O., Miskin, I., Head, I. M., and Curtis, T. P. (2009). Effect of sludge age on the bacterial diversity of bench scale sequencing batch reactors. *Environmental Science & Technology*, 43(8), 2950-2956.
8. Fang, H., Chen, Y., Huang, L., and He, G. (2017). Analysis of biofilm bacterial communities under different shear stresses using size-fractionated sediment. *Scientific Reports*, 7(1), 1299.
9. Roager, H. M., Hansen, L. B., Bahl, M. I., Frandsen, H. L., Carvalho, V., Gøbel, R. J., et al. (2016). Colonic transit time is related to bacterial metabolism and mucosal turnover in the gut. *Nature Microbiology*, 1(9), 16093.
10. Kreuzinger, N., Clara, M., Strenn, B., and Kroiss, H. (2004). Relevance of the sludge retention time (SRT) as design criteria for wastewater treatment plants for the removal of endocrine disruptors and pharmaceuticals from wastewater. *Water Science and Technology*, 50(5), 149-156.
11. Falås, P., Andersen, H. R., Ledin, A., and la Cour Jansen, J. (2012). Impact of solid retention time and nitrification capacity on the ability of activated sludge to remove pharmaceuticals. *Environmental Technology*, 33(8), 865-872.
12. Johnson, D. R., Lee, T. K., Park, J., Fenner, K., and Helbling, D. E. (2015). The functional and taxonomic richness of wastewater treatment plant microbial communities are associated with each other and with ambient nitrogen and carbon availability. *Environmental Microbiology*, 17(12), 4851-4860.
13. Pholchan, M. K., Baptista, J. D. C., Davenport, R. J., Sloan, W. T., and Curtis, T. P. (2013). Microbial community assembly, theory and rare functions. *Frontiers in Microbiology*, 4.

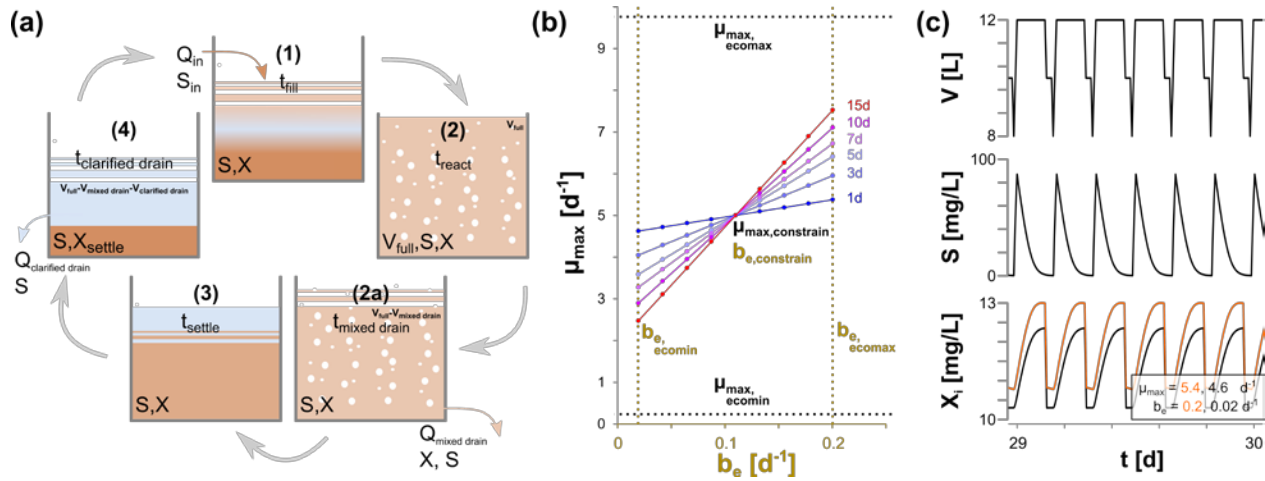
14. Louca, S., Parfrey, L. W., and Doebeli, M. (2016). Decoupling function and taxonomy in the global ocean microbiome. *Science*, 353(6305), 1272-1277.
15. Louca, S., Jacques, S. M., Pires, A. P., Leal, J. S., Srivastava, D. S., Parfrey, L. W., et al. (2017). High taxonomic variability despite stable functional structure across microbial communities. *Nature Ecology & Evolution*, 1(1), 0015.
16. Frossard, A., Gerull, L., Mutz, M., and Gessner, M. O. (2012). Disconnect of microbial structure and function: enzyme activities and bacterial communities in nascent stream corridors. *The ISME Journal*, 6(3), 680-691.
17. Purahong, W., Schloter, M., Pecyna, M. J., Kapturska, D., Däumlich, V., Mital, S., et al. (2014). Uncoupling of microbial community structure and function in decomposing litter across beech forest ecosystems in Central Europe. *Scientific Reports*, 4, 7014.
18. Kivlin, S. N., and Hawkes, C. V. (2016). Temporal and spatial variation of soil bacteria richness, composition, and function in a neotropical rainforest. *PloS One*, 11(7), e0159131.
19. Burke, C., Steinberg, P., Rusch, D., Kjelleberg, S., and Thomas, T. (2011). Bacterial community assembly based on functional genes rather than species. *Proceedings of the National Academy of Sciences*, 108(34), 14288-14293.
20. Boon, E., Meehan, C. J., Whidden, C., Wong, D. H. J., Langille, M. G., and Beiko, R. G. (2014). Interactions in the microbiome: communities of organisms and communities of genes. *FEMS Microbiology Reviews*, 38(1), 90-118.
21. Daims, H., Taylor, M. W., and Wagner, M. (2006). Wastewater treatment: a model system for microbial ecology. *Trends in Biotechnology*, 24(11), 483-489.
22. Downing, A. L., and Hopwood, A. P. (1964). Some observations on the kinetics of nitrifying activated-sludge plants. *Schweizerische Zeitschrift für Hydrologie*, 26(2), 271-288.
23. Lawrence, A. W., and McCarty, P. L. (1970). Unified basis for biological treatment design and operation. *Journal of the Sanitary Engineering Division*, 96(3), 757-778.
24. Henze, M., Gujer, W., Mino, T., and Van Loosdrecht, M. C. M. (2000). Activated sludge models ASM1, ASM2, ASM2d and ASM3. IWA publishing.
25. Degnan, P. H., and Ochman, H. (2012). Illumina-based analysis of microbial community diversity. *The ISME Journal*, 6(1), 183-194.
26. Sinclair, L., Osman, O.A., Bertilsson, S., and Eiler, A. (2015) Microbial community composition and diversity via 16S rRNA Gene Amplicons: Evaluating the Illumina Platform. *PLoS One* 10(2): e0116955.
27. Knight, R., Vrbanac, A., Taylor, B.C., Aksenov, A., Callewaert, C., Debelius, J., et al. (2018) Best practices for analysing microbiomes. *Nature Reviews Microbiology*, 16, 410-422.
28. van Bodegom, P. (2007). Microbial maintenance: a critical review on its quantification. *Microbial Ecology*, 53(4), 513-523.

29. Achermann, S., Falas, P., Joss, A., Mansfeldt, C., Men, Y., Vogler, B., et al. (2018) Trends in micropollutant biotransformation along a solids retention time gradient. *Environmental Science & Technology*, 52(20),11601–11611
30. Guo, F., Ju, F., Cai, L., and Zhang, T. (2013). Taxonomic precision of different hypervariable regions of 16S rRNA gene and annotation methods for functional bacterial groups in biological wastewater treatment. *PloS One*, 8(10), e76185.
31. Andrews, S. (2010). FastQC: a quality control tool for high throughput sequence data.
32. Schmieder, R., & Edwards, R. (2011). Quality control and preprocessing of metagenomic datasets. *Bioinformatics*, 27(6), 863-864.
33. Edgar, R. C. (2010). Search and clustering orders of magnitude faster than BLAST. *Bioinformatics*, 26(19), 2460-2461.
34. Martin, M. (2011). Cutadapt removes adapter sequences from high-throughput sequencing reads. *EMBnet*, 17(1):10.
35. McMurdie, P. J., and Holmes, S. (2013). phyloseq: an R package for reproducible interactive analysis and graphics of microbiome census data. *PloS One*, 8(4), e61217.
36. Hill, M. O. (1973). Diversity and evenness: a unifying notation and its consequences. *Ecology*, 54(2), 427-432.
37. Chao, A., Chiu, C. H., and Jost, L. (2010). Phylogenetic diversity measures based on Hill numbers. *Philosophical Transactions of the Royal Society B – Biological Sciences*, 365(1558), 3599-3609.
38. Chao, A., Gotelli, N. J., Hsieh, T. C., Sander, E. L., Ma, K. H., Colwell, R. K., et al. (2014). Rarefaction and extrapolation with Hill numbers: a framework for sampling and estimation in species diversity studies. *Ecological Monographs*, 84(1), 45-67.
39. Bolger, A. M., Lohse, M., and Usadel, B. (2014). Trimmomatic: a flexible trimmer for Illumina sequence data. *Bioinformatics*, 30(15), 2114-2120.
40. Kopylova, E., Noé, L., and Touzet, H. (2012). SortMeRNA: fast and accurate filtering of ribosomal RNAs in metatranscriptomic data. *Bioinformatics*, 28(24), 3211-3217.
41. Buchfink, B., Xie, C., and Huson, D. H. (2015). Fast and sensitive protein alignment using DIAMOND. *Nature Methods*, 12(1), 59-60.
42. Monod, J. (1949). The growth of bacterial cultures. *Annual Reviews in Microbiology*, 3(1), 371-394.
43. Liu, G., and Wang, J. (2015). Modeling effects of DO and SRT on activated sludge decay and production. *Water Research*, 80, 169-178.
44. Saikaly, P. E., and Oerther, D. B. (2004). Bacterial competition in activated sludge: theoretical analysis of varying solids retention times on diversity. *Microbial Ecology*, 48(2), 274-284.
45. Hsu, S. B., Hubbell, S., and Waltman, P. (1977). A mathematical theory for single-nutrient competition in continuous cultures of micro-organisms. *SIAM Journal on Applied Mathematics*, 32(2), 366-383.

46. Saikaly, P. E., and Oerther, D. B. (2011). Diversity of dominant bacterial taxa in activated sludge promotes functional resistance following toxic shock loading. *Microbial Ecology*, 61(3), 557-567.
47. Habermacher, J., Benetti, A. D., Derlon, N., and Morgenroth, E. (2015). The effect of different aeration conditions in activated sludge-side-stream system on sludge production, sludge degradation rates, active biomass and extracellular polymeric substances. *Water Research*, 85, 46-56.
48. Martínez-García, C. G., Fall, C., and Olguín, M. T. (2016). Activated sludge mass reduction and biodegradability of the endogenous residues by digestion under different aerobic to anaerobic conditions: comparison and modeling. *Bioresource Technology*, 203, 32-41.
49. Friedrich, M., and Takács, I. (2013). A new interpretation of endogenous respiration profiles for the evaluation of the endogenous decay rate of heterotrophic biomass in activated sludge. *Water Research*, 47(15), 5639-5646.
50. Friedrich, M., Jimenez, J., Pruden, A., Miller, J. H., Metch, J., and Takács, I. (2017). Rethinking growth and decay kinetics in activated sludge—towards a new adaptive kinetics approach. *Water Science and Technology*, 75(3), 501-506.
51. Soetaert, K. E. R., Petzoldt, T., and Setzer, R. W. (2010). Solving differential equations in R: package deSolve. *Journal of Statistical Software*, 33.
52. Duan, L., Moreno-Andrade, I., Huang, C. L., Xia, S., and Hermanowicz, S. W. (2009). Effects of short solids retention time on microbial community in a membrane bioreactor. *Bioresource Technology*, 100(14), 3489-3496.
53. Saikaly, P. E., Stroot, P. G., and Oerther, D. B. (2005). Use of 16S rRNA gene terminal restriction fragment analysis to assess the impact of solids retention time on the bacterial diversity of activated sludge. *Applied and Environmental Microbiology*, 71(10), 5814-5822.
54. Gonzalez-Martinez, A., Rodriguez-Sanchez, A., Lotti, T., Garcia-Ruiz, M. J., Osorio, F., Gonzalez-Lopez, J., et al. (2016). Comparison of bacterial communities of conventional and A-stage activated sludge systems. *Scientific Reports*, 6, 18786.
55. Zhang, T., Shao, M. F., and Ye, L. (2011). 454 Pyrosequencing reveals bacterial diversity of activated sludge from 14 sewage treatment plants. *The ISME Journal*, 6(6), 1137-1147.
56. Saunders, A. M., Albertsen, M., Vollertsen, J., and Nielsen, P. H. (2016). The activated sludge ecosystem contains a core community of abundant organisms. *The ISME Journal*, 10(1), 11-20.
57. Pollice, A., Tandoi, V., and Lestingi, C. (2002). Influence of aeration and sludge retention time on ammonium oxidation to nitrite and nitrate. *Water Research*, 36(10), 2541-2546.
58. Jiang, L. (2007). Negative selection effects suppress relationships between bacterial diversity and ecosystem functioning. *Ecology*, 88(5), 1075-1085.
59. Prosser, J. I., Head, I. M., and Stein, L. Y. (2014). The family *Nitrosomonadaceae*. In *The Prokaryotes* (pp. 901-918). Springer Berlin Heidelberg.

60. Vuono, D. C., Regnery, J., Li, D., Jones, Z. L., Holloway, R. W., and Drewes, J. E. (2016). rRNA gene expression of abundant and rare activated-sludge microorganisms and growth rate induced micropollutant removal. *Environmental Science & Technology*, 50(12), 6299-6309.
61. Grime, J. P., & Pierce, S. (2012). *The evolutionary strategies that shape ecosystems*. John Wiley & Sons.
62. Ho, A., Di Lonardo, D. P., & Bodelier, P. L. (2017). Revisiting life strategy concepts in environmental microbial ecology. *FEMS Microbiology Ecology*, 93(3).
63. Andrews, J. H., & Harris, R. F. (1986). r- and K-selection and microbial ecology. In *Advances in Microbial Ecology* (pp. 99-147). Springer, Boston, MA.
64. Větrovský, T., and Baldrian, P. (2013). The variability of the 16S rRNA gene in bacterial genomes and its consequences for bacterial community analyses. *PloS One*, 8(2), e57923.
65. Chandran, K., and Smets, B. F. (2001). Estimating biomass yield coefficients for autotrophic ammonia and nitrite oxidation from batch respirograms. *Water Research*, 35(13), 3153-3156.
66. Friedrich, M., Takács, I., and Tränckner, J. (2015). Physiological adaptation of growth kinetics in activated sludge. *Water Research*, 85(15), 22-30.
67. Vuono, D. C., Munakata-Marr, J., Spear, J. R., and Drewes, J. E. (2016). Disturbance opens recruitment sites for bacterial colonization in activated sludge. *Environmental Microbiology*, 18(1), 87-99.
68. Blazewicz, S. J., Barnard, R. L., Daly, R. A., and Firestone, M. K. (2013). Evaluating rRNA as an indicator of microbial activity in environmental communities: limitations and uses. *The ISME Journal*, 7(11), 2061-2068.
69. Yu, K., and Zhang, T. (2012). Metagenomic and metatranscriptomic analysis of microbial community structure and gene expression of activated sludge. *PloS One*, 7(5), e38183.
70. Prosser, J. I. (2015). Dispersing misconceptions and identifying opportunities for the use of omics' in soil microbial ecology. *Nature Reviews Microbiology*, 13(7), 439-446.
71. Bar-Even, A., Noor, E., Savir, Y., Liebermeister, W., Davidi, D., Tawfik, D. S., et al. (2011). The moderately efficient enzyme: evolutionary and physicochemical trends shaping enzyme parameters. *Biochemistry*, 50(21), 4402-4410.
72. de Sousa Abreu, R., Penalva, L. O., Marcotte, E. M., and Vogel, C. (2009). Global signatures of protein and mRNA expression levels. *Molecular BioSystems*, 5(12), 1512-1526.
73. Vogel, C., and Marcotte, E. M. (2012). Insights into the regulation of protein abundance from proteomic and transcriptomic analyses. *Nature Reviews Genetics*, 13(4), 227-232.
74. Daims, H., Lückner, S., and Wagner, M. (2016). A new perspective on microbes formerly known as nitrite-oxidizing bacteria. *Trends in Microbiology*, 24(9), 699-712.
75. Salvado, H. (1994). Effect of mean cellular retention time on ciliated protozoan populations in urban wastewater treatment plants based on a proposed model. *Water Research*, 28(6), 1315-1321.

671 **List of Figure Legends:**



672
673 **Figure 1.** (a) Schematic diagram of the SBR used when running the model. All parameters are detailed in
674 Table 1. (b) Iteratively solved 9 point persistence curves for the maximum growth rate (μ_{\max}) and
675 endogenous decay (b_e) selection range at 1, 3, 5, 7, 10, and 15 d MRT. Constraints are placed on the range
676 of maximal growth rates ($\mu_{\max \text{ eco}}$; 0.2 to 9.8 d⁻¹) and endogenous decay constants ($b_{e \text{ eco}}$; 0.02 to 0.2 d⁻¹),
677 defining the ecological space available. The model uses controlling growth parameters ($\mu_{\max \text{ constrain}}$, $b_{e \text{ constrain}}$)
678 of 5 and 0.11 d⁻¹, respectively. (c) Example of the steady-state output for the volume, substrate
679 concentration, and two biomasses for the 1 d MRT.

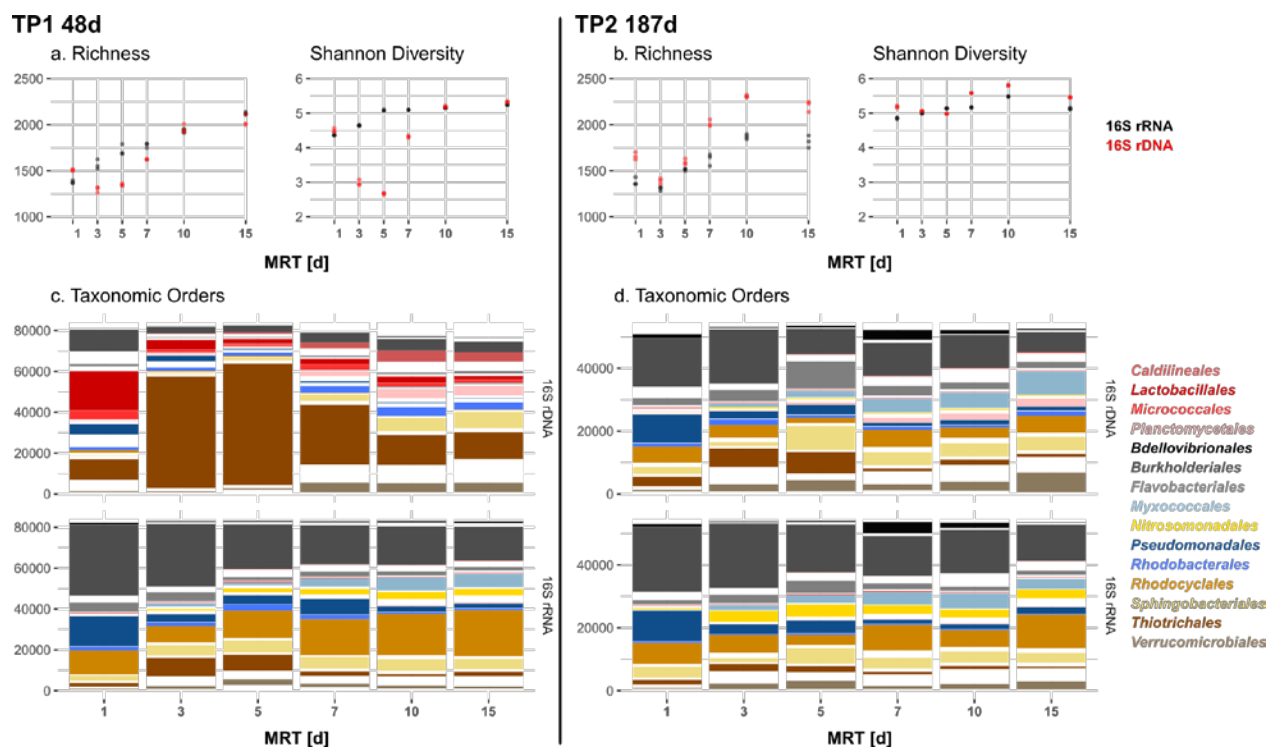
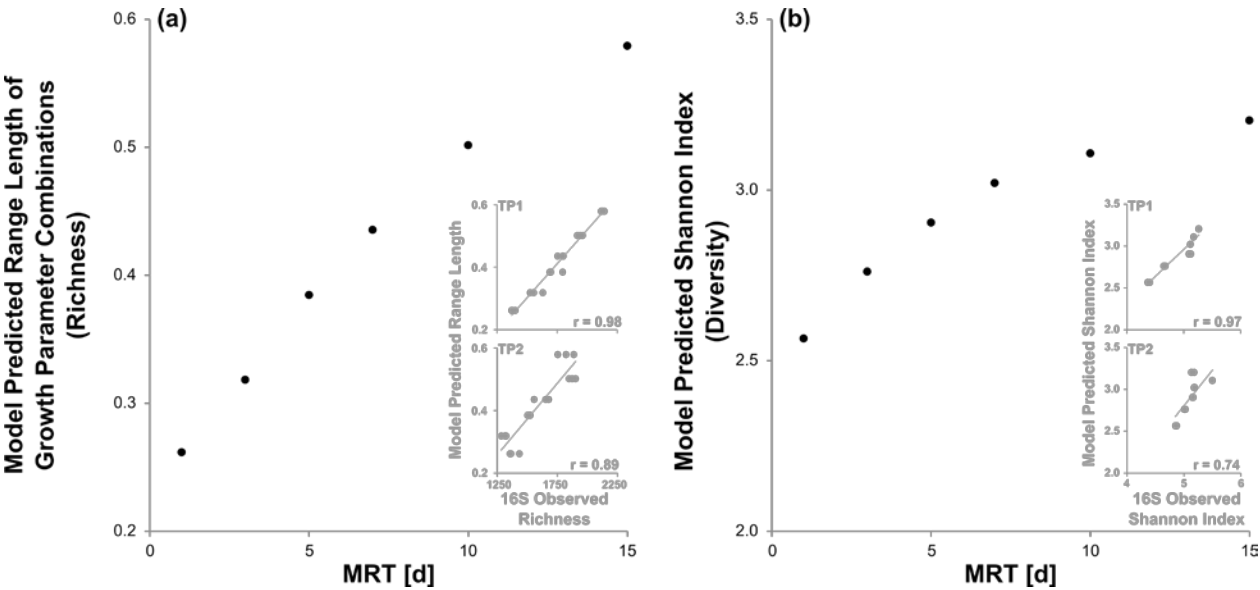


Figure 2. (a,b) The calculated diversity metrics for the rarified B2-primer amplified 16S rRNA (black) and rDNA (red) data. (c,d) The abundance data distributed into taxonomic orders; the top 10 of the sums across each time-point and source (cDNA or gDNA) were assigned a color, resulting in 15 orders being represented overall. A replicate analysis is presented for the alternate B1 primer in Supplemental Figure 15.

686



687

688 **Figure 3.** Alpha diversity results from the MRT-diversity model explaining the relationship between the
689 community composition and the MRT. (a) The range of growth parameters, a proxy for the richness, with
690 increasing MRT. The inset displays the linear relationship between the model predicted and the observed
691 richness data. (b) The calculated Shannon diversity index. The number of species types modelled in the
692 Shannon diversity index calculations is set to 50 times the length of the range of growth parameters. The
693 inset displays the linear relationship between the model predicted and the observed Shannon Index data.

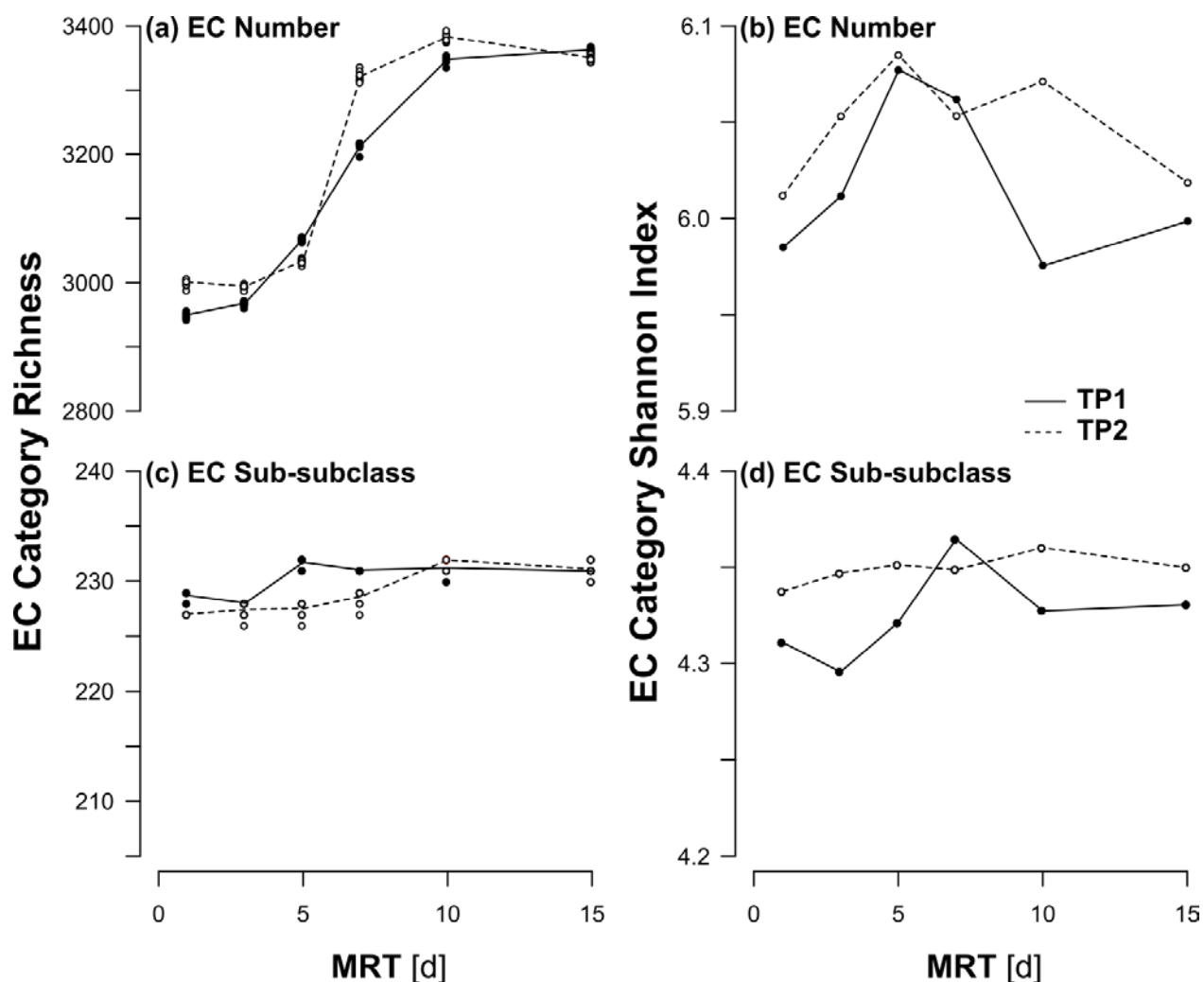


Figure 4. The richness (a,c) and Shannon diversity (b,d) values for the reaction-type annotated RNA data binned into Enzyme Commission (EC) number (a,b) and sub-subclass (c,d) for TP1 (solid) and TP2 (dashed) with a fractional abundance cutoff of 10^{-7} . These diversity values were calculated for each reactor using the rtk v0.2.5.4 package in R v3.5.1 for (a,c) 10 bootstrap sub-selections of the annotations or (b,d) the full data. The lines trace the (a,c) bootstrap mean or (b,d) calculated value.

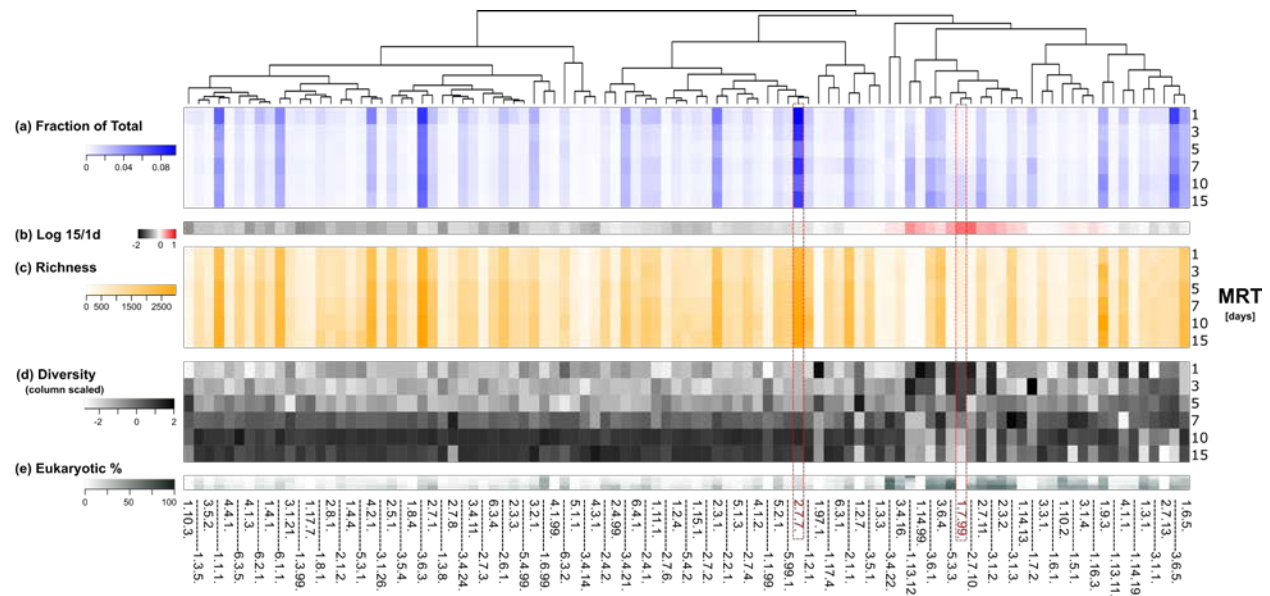


Figure 5. Summary of the sub-subclass Enzyme Commission (EC) numbers across the MRT gradient averaged between TP1 and TP2 samples that exceed 10,000 normalized reads in at least 1 reactor (n=99). The heatmaps are organized hierarchically according to a Euclidean distance and ward clustering of the scaled EC fraction across the MRT gradient. (a) Total relative abundance. (b) The 15/1d MRT abundance log ratio. The within EC sub-subclass taxonomic (c) richness and (d) Shannon diversity metrics were calculated based on the Uniprot identifiers of the organism of origin at the genus level that provided the annotation to the reads. (e) The fraction of the total reads that were annotated per EC sub-subclass originating from a Eukaryotic sequence in the Uniprot database. Note: the red dashed boxes highlight the 2.7.7 and 1.7.99 EC numbers. The full sub-subclass and top 50 EC numbers heatmaps for both TP1 and TP2 samples are presented in Supplemental Figure 17 and 18.

713 **Table 1.** Model nomenclature and parameter values

Symbol	Parameter	Units	Value	Source	Model Sensitivity
μ_{max}	Maximum growth rate	d ⁻¹	-	-	Modelled Parameter
$\mu_{max,eco,min}$	Lowest maximum growth rate allowed	d ⁻¹	0.2	50,51	Sensitive*
$\mu_{max,eco,max}$	Highest maximum growth rate allowed	d ⁻¹	9.8	52	Sensitive*
$\mu_{max,constrain}$	Constraining growth rate used for modelling	d ⁻¹	5	Set to range center	Sensitive*
b_e	Endogenous decay	d ⁻¹	-	-	Modelled Parameter
$b_{e,eco,min}$	Lowest endogenous decay rate allowed	d ⁻¹	0.02	53	Sensitive*
$b_{e,eco,max}$	Highest endogenous decay rate allowed	d ⁻¹	0.2	53	Sensitive*
$b_{e,constrain}$	Constraining endogenous decay used for modelling	d ⁻¹	0.11	Set to range center	Sensitive*
K_s	Half-saturation constant	mg/L	50	Typical value	Insensitive†
Y	Yield	mg X/mg S	0.3	Typical value	Insensitive
S_{in}	Influent substrate concentration	mg/L	250	Typical value	Insensitive
S	Substrate concentration in the reactor	mg/L	-	-	Modelled Parameter
X	Biomass concentration	mg/L	-	-	Modelled Parameter
X_{settle}	Settled biomass concentration	mg/L	-	-	Modelled Parameter
V_{full}	Full volume of reactor	L	12	Experimental Setup	-
V_t	Time variable volume of reactor	L	-	-	Modelled Parameter
$V_{mixed\ drain}$	Mixed volume removed, dependent on MRT	L	Variable‡	Experimental Setup	-
$V_{clarified\ drain}$	Clarified volume removed, 4 L - $V_{mixed\ drain}$	L	Variable‡	Experimental Setup	-
t_{cycle}	Total cycle time	hr	4	Experimental Setup	-
t_{react}	React time	hr	3	Experimental Setup	-
t_{settle}	Settle time	hr	0.5	Experimental Setup	-
$t_{mixed\ drain}$	Time to drain the mixed volume	hr	0.167	Experimental Setup	-
$t_{clarified\ drain}$	Time to drain the clarified volume	hr	0.167	Experimental Setup	-
t_{fill}	Fill time	hr	0.333	Experimental Setup	-
$Q_{mixed\ drain}$	Clarified drain flowrate	L/hr	$V_{mixed\ drain}/t_{mixed\ drain}$	Experimental Setup	-
$Q_{clarified\ drain}$	Clarified drain flowrate	L/hr	$V_{clarified\ drain}/t_{clarified\ drain}$	Experimental Setup	-
Q_{in}	Influent flowrate	L/hr	12	Experimental Setup	-

*See Supplemental Figure 15, †See Supplemental Figure 14, ‡See Supplemental Table 1

714

This document is the accepted manuscript version of the following article:

Mansfeldt, C., Achermann, S., Men, Y., Walser, J. C., Villez, K., Joss, A., ... Fenner, K. (2019). Microbial residence time is a controlling parameter of the taxonomic composition and functional profile of microbial communities. ISME Journal. <https://doi.org/10.1038/s41396-019-0371-6>