

DOI: 10.1002/((please add manuscript number))

Article type: Communication

Aluminum Chloride-graphite Batteries with Flexible Current Collectors Prepared from Earth-abundant Elements*Shutao Wang,^{†,‡,#} Kostiantyn V. Kravchyk,^{†,‡,#} Alejandro N. Filippin,^{‡,#} Ulrich Müller,[‡] Ayodhya N. Tiwari,[‡] Stephan Buecheler,[‡] Maryna I. Bodnarchuk,[‡] and Maksym V. Kovalenko^{*,†,‡}*

S. Wang, Dr. K. V. Kravchyk, Prof. Dr. M. V. Kovalenko

[†] Laboratory of Inorganic Chemistry, Department of Chemistry and Applied Biosciences, ETH Zürich, Vladimir-Prelog-Weg 1, CH-8093 Zürich, Switzerland[‡] Laboratory for Thin Films and Photovoltaics, Empa – Swiss Federal Laboratories for Materials Science and Technology, Überlandstrasse 129, CH-8600 Dübendorf, Switzerland^{*}E-mail: mvkovalenko@ethz.ch[#]Equal contributions

Dr. A. N. Filippin, Prof. Dr. A. N. Tiwari, Dr. S. Buecheler, Dr. M.I. Bodnarchuk

[‡] Laboratory for Thin Films and Photovoltaics, Empa – Swiss Federal Laboratories for Materials Science and Technology, Überlandstrasse 129, CH-8600 Dübendorf, Switzerland

Dr. Ulrich Müller

[‡] Laboratory for Nanoscale Materials Science, Empa – Swiss Federal Laboratories for Materials Science and Technology, Überlandstrasse 129, CH-8600 Dübendorf, Switzerland

Keywords: Aluminum chloride-graphite battery, titanium nitride, current collector, graphite, energy density.

This document is the accepted manuscript version of the following article:
 Wang, S., Kravchyk, K. V., Filippin, A. N., Müller, U., Tiwari, A. N., Buecheler, S., ... Kovalenko, M. V. (2018). Aluminum chloride-graphite batteries with flexible current collectors prepared from earth-abundant elements. *Advanced Science*, 5(4), 1700712 (6 pp.). <https://doi.org/10.1002/advs.201700712>

In the search for low-cost and large-scale stationary storage of electricity, non-aqueous aluminum chloride-graphite batteries (AlCl_3 -GBs) have received much attention due to the high natural abundances of their primary constituents, facile manufacturing and high energy densities. Much research has focused on the judicious selection of graphite cathode materials, leading to the most notable recent advances in the performance of AlCl_3 -GBs. However, the major obstacle to commercializing this technology is the lack of oxidatively stable, inexpensive current collectors that can operate in chloroaluminate ionic liquids and are composed of earth-abundant elements. This study presents the use of titanium nitride (TiN) as a compelling material for this purpose. Flexible current collectors can be fabricated by coating TiN on stainless steel or flexible polyimide substrates by low-cost, rapid, scalable methods such as magnetron sputtering. When these current collectors are used in AlCl_3 -GB coin or pouch cells, stable cathodic operation is observed at voltages of up to 2.5 V vs. Al^{3+}/Al . Furthermore, these batteries have a high coulombic efficiency of 99.5%, power density of 4500 W kg^{-1} and cyclability of at least 500 cycles.

Interest in grid-scale batteries for stationary electricity storage has soared over the past decade due to the growing contributions of variable energy sources, such as wind and solar, to total global electricity production.^[1, 2] In highly simplified terms, the economic feasibility of grid-scale electricity storage can be determined by comparing the capital costs of stored energy per cycle (¢ / kWh-cycle) of new technologies to those of traditional pumped hydroelectric storage ($0.1\text{-}1.4 \text{ ¢ / kWh-cycle}$), which is currently the predominant technology.^[3] The energy densities of grid-scale battery systems, typically expressed in Wh kg^{-1} , are less important than those of rechargeable batteries in portable electronics and mobile applications. The strict cost requirements can only be met when a battery is exclusively composed of inexpensive, earth-abundant, easy-to-produce components. For example, the use of Li ions can be questionable due to the limited, non-uniform natural abundance of this element in the Earth's crust.^[4, 5] Hence, research has increasingly focused on the electrochemistries of Na,^[6-19] K,^[20-24] Ca,^[25-28] Mg,^[29-32] and Al.^[33-39] In particular, aluminum chloride-graphite batteries ($\text{AlCl}_3\text{-GBs}$) have attracted considerable attention because they are composed of highly abundant elements (H, O, N, C and Al) and have appropriate energy densities ($30\text{-}70 \text{ Wh kg}^{-1}$).^[33, 37, 40, 41] The basic architecture of an $\text{AlCl}_3\text{-GB}$ consists of a metallic aluminum current collector, $\text{AlCl}_3\text{-[EMIM]Cl}$ (1-ethyl-3-methylimidazolium chloride) ionic liquid anolyte and graphite cathode, as shown in **Figure 1a**. To date, natural graphite flakes,^[40, 41] kish graphite flakes,^[42] graphitic foams,^[33, 43] graphene nanoribbons^[44], few-layer graphene aerogels,^[45] graphene mesh network,^[46] large-sized few-layer graphene,^[47] and carbon paper (of graphitic nature),^[48-50] have been employed as the cathode material, delivering capacities of $60\text{-}150 \text{ mAh g}^{-1}$ and average discharge voltages of $1.7\text{-}2 \text{ V}$.

In contrast, the focus of this work is to find inexpensive stable materials that are suitable cathode current collectors, addressing the most pressing limitation of $\text{AlCl}_3\text{-GBs}$. Common metals, such as Al and stainless steel (SS), are rapidly corroded in AlCl_3 -based ionic liquids at the high voltages employed during cathode operation. It was determined that the corrosion

onset potential of 2.5 V *vs.* Al^{3+}/Al in $\text{AlCl}_3\text{-[EMIM]Cl}$ is equivalent to a potential of 4.8 V *vs.* Li^+/Li (see Supporting Information, Figure S1a-d). Even the noble metal gold is rapidly etched at 2 V *vs.* Al^{3+}/Al (Figure S2). Hence, the only stable current collectors employed to date were based on tungsten (W), molybdenum (Mo) and glassy carbon (GC).

Herein, we report that titanium nitride (TiN), a strongly electrically conductive material composed of abundant elements, is ideally suited for use as an $\text{AlCl}_3\text{-GB}$ current collector due to its high oxidative stability in the ionic liquid $\text{AlCl}_3\text{-[EMIM]Cl}$ at potentials of up to at least 2.5 V *vs.* Al^{3+}/Al . TiN films can be deposited on stainless steel and flexible polyimide substrates for use in coin and pouch cell batteries, respectively. The superior stability of these materials toward electrochemical oxidation enables a higher coulombic efficiency of $\sim 99.5\%$ to be achieved at currents of 1-10 A g^{-1} . The $\text{AlCl}_3\text{-GBs}$ with TiN current collectors also exhibit a high power density of 4500 W kg^{-1} at a high graphite loading (10 mg cm^{-2}) and are stable for at least 500 cycles.

The natural abundance of Ti in the Earth's crust is 4-5 orders of magnitude higher than those of Mo and W (**Figure 1b**), and the nitrogen supply is essentially unlimited. TiN has been used as a "diffusion barrier metal" in microelectronics and as a protective and/or hard coating due to its high corrosion resistance and good edge retention.^[52] In this work, TiN current collector films were magnetron sputtered onto stainless steel and flexible polyimide substrates under a nitrogen-argon atmosphere using a Ti target (**Figures 1c-d**). Magnetron sputtering enables the scalable and inexpensive fabrication of TiN films on a square meter scale (**Figure 1c**). X-ray diffraction (XRD) analysis (Figure S3) indicates the formation of a pure-phase TiN film on the polyimide substrate (space group $Fm\bar{3}m$, $a = 0.4241$ nm, JCPDS 038-1420).^[53] The XRD pattern of the TiN films shows that they are highly oriented in the (111) direction, and the cross-sectional scanning electron microscopy (SEM) images shown in **Figures 1f** and S4 reveal their columnar morphology. Top-view SEM images of the samples show that the substrates are completely covered by the nonporous, pin-hole-free and continuous films

(Figure S5). The use of the polyimide substrate imparts good flexibility to the current collector (**Figure 1e**). Importantly, repeatedly bending the 20-1000-nm-thick TiN films does not result in a decrease in the electrical conductivity, as illustrated in the video file in the Supporting Information (Video S1).

The electrochemical stability of the TiN current collector in a chloroaluminate ionic liquid was evaluated using the most acidic ionic liquid formulation, *i.e.*, an $\text{AlCl}_3\text{:}[\text{EMIM}]\text{Cl}$ ratio (denoted r) of 2.0. It should be noted that this r value, which is the highest value at which the mixture is still completely liquid, yields a theoretical energy density of 65-70 Wh kg^{-1} .^[41, 42] At lower r values of 1.1 and 1.3, the theoretical energy densities are only 13 and 33 Wh kg^{-1} , respectively. The charge storage capacity of the graphite electrode has a relatively minor effect on the overall theoretical energy density of the battery, as demonstrated and discussed in detail in our earlier publications.^[41, 42] **Figure 2a** shows the cyclic voltammetry (CV) curves for various current collectors in the chloroaluminate ionic liquid, and the results are summarized in **Figure 2b**. The onset of electrochemical oxidation occurs at 0.62 V, 0.92 V, 1 V and 1.1 V *vs.* Al^{3+}/Al for chromium (Cr), SS, Al and Ti metals, respectively. Furthermore, even gold and platinum are not stable at potentials above 2 V. The oxidative stability of TiN in $\text{AlCl}_3\text{-}[\text{EMIM}]\text{Cl}$ exceeds those of Mo, W and GC. The inset in **Figure 2a** shows the measured current for the TiN current collector on a logarithmic scale as a function of the applied voltage. The linear part of the TiN current–potential relationship can be well fitted by the Tafel equation, which confirms the absence of any parasitic oxidation reactions at potentials of up to 2.5 V:

$$i = i_0 \exp \frac{n(E-\varepsilon)}{RT} \quad (1)$$

where i and i_0 are the measured current and exchange current density, respectively; n is the number of electrons transferred in the elemental redox reaction; E and ε are the applied and standard redox potentials, respectively; R is the gas constant; and T is the temperature. A

chromium nitride (Cr_2N) current collector also exhibits a similar oxidative stability (**Figure 2a**). The increase in the current above 2.5-3 V *vs.* Al^{3+}/Al for the TiN and Cr_2N current collectors is primarily due to the oxidation of the ionic liquid, which results in Cl_2 gas evolution.^[54]

To analyze the results for the Al-based batteries from a broader electrochemical perspective, the exact location of the Al^{3+}/Al potential in $\text{AlCl}_3\text{-[EMIM]Cl}$ on the absolute scale *vs.* the standard hydrogen electrode (SHE) was estimated, thus allowing a comparison of the Li and Na electrochemistries. Using specially constructed cells consisting of a β -alumina solid electrolyte and Na reference electrode (see Figure S1a-d), the Al^{3+}/Al redox reaction (electroplating/electrostripping) is determined to occur at 2 V *vs.* Na^+/Na (*i.e.*, -0.7 V *vs.* SHE and 2.3 V *vs.* Li^+/Li), whereas the ionic liquid oxidation process starts at a potential that is ca. 2.5 V higher (4.5 V *vs.* Na^+/Na , 1.8 V *vs.* SHE, and 4.8 V *vs.* Li^+/Li). These results highlight the high oxidative stability of TiN, and this analysis is also valid at a very slow CV sweep rate of 1 mV s^{-1} (Figure S6). Consequently, the TiN current collector was also tested in Li and Na electrolytes and was found to outperform common Al and SS current collectors, particularly in Li(Na) bis(fluorosulfonyl)imide (FSI)-based electrolytes (Figure S7). Future studies will provide more details about the effectiveness of TiN and similar metal nitrides as alternative current collectors for high-voltage cathode materials in Li- and Na-ion batteries.

Previously, the high corrosion resistance of TiN was explained by the presence of titanium deficiencies and thus terminal N groups in the surface layer.^[55, 56] Nitrogen atoms shield the underlying Ti^{3+} ions, thereby protecting them from oxidation to Ti^{4+} . Therefore, TiN has a much higher oxidative stability than pure titanium metal.

The surface of TiN was examined by X-ray photoelectron spectroscopy (XPS) before and after cyclic voltammetry measurements (1000 cycles within 1-2.5 V *vs.* Al^{3+}/Al voltage range) in order to shed the light onto the chemical processes at the surface (**Figure 2c**). No substantial reactivity can be deduced based on the practically identical Ti 2p and N 1s bands

after cycling. Furthermore, no Cl 2p signal can be observed for the cycled TiN collector. The N/Ti ratios on the TiN surface were nearly identical before and after cycling (1.0 ± 0.1 and 1.0 ± 0.1 , respectively).

The electrical conductivity was evaluated by measuring the sheet resistances of TiN current collectors with different thicknesses (20-1000 nm) by a four-point probe method (**Figure 2d**). The sheet resistance decreases dramatically at thicknesses of less than 100 nm, whereas 0.2-1- μm -thick films exhibit similar conductivities. The calculated electrical conductivities of all the tested films are in the range of $4\text{--}4.5 \times 10^5 \text{ S m}^{-1}$. The temperature dependence of the TiN resistivity in the range of -10°C to 60°C was also investigated and found to be linear (inset in **Figure 2d**), which is consistent with the work of Solovan *et al.*^[57] The temperature coefficient of electrical resistance (TCR) at 20°C is as low as $9.7 \times 10^{-4}^\circ\text{C}^{-1}$. Assuming that the bulk electrical conductivity in the *ab* direction is that of graphite ($3 \times 10^5 \text{ S m}^{-1}$),^[58] the carrier transport rate is not limited by a 1- μm -thick TiN film combined with graphite electrodes with thicknesses of up to 440 μm . In practice, the conductivity of graphite flakes is up to a factor of 3 lower than the idealized bulk value,^[59] further highlighting the potential of TiN for use as a current collector. These considerations are further supported by the observation of the high power density (rate-capability), as discussed below.

Full-cell tests were conducted using coin and pouch cell configurations (**Figures 3, S8**). The $\text{AlCl}_3\text{:}[\text{EMIM}]\text{Cl}$ ratio was 2, and the cathode in the AlCl_3 -graphite cells consisted of kish graphite flakes in all the experiments.^[42] The electrodes in the coin cells consisted of pressed graphite powder (10 mg cm^{-2}), and no binders or conductive additives were used to exclude their effects on the observed characteristics. **Figure 3a** shows the rate capability and coulombic efficiency data for AlCl_3 -GBs with TiN and W current collectors. Following our previous work,^[42] a CCCV charging protocol with constant voltage steps at 1.92 V and 2.07 V was employed for all the electrochemical measurements, which improved the graphite

capacity by 10-20 mAh g⁻¹. At high current densities (≥ 1 A g⁻¹), the coulombic efficiencies of the TiN and W current collectors are nearly identical (99.5% and 99.1%, respectively).

However, the measurements conducted at a slow rate (0.05 A g⁻¹) indicate that TiN current collector afford for higher value of 96.3% (**Figure 3b**). Importantly, graphite flakes measured on both TiN and W current collectors have shown similar charge-storage capacities of approximately 125 mAh g⁻¹ at broadly varied current densities (1-10 A g⁻¹), in all cases retaining the superb flatness of the voltage profiles (**Figure 3c**). At the highest current density of 10 A g⁻¹, the power density is estimated to be 4500 W kg⁻¹. Additionally, the cycling tests (**Figures 3d**) at this current density show that not only does the capacity remain above 120 mAh g⁻¹, but the coulombic efficiency is also 99.5% for at least 500 cycles. Similar electrochemical performance of kish graphite flakes was observed with pouch cell configuration using TiN/polyimide current collector (Figure S8). It should be noted that stable cycling behavior was also measured for an AlCl₃-GB with a Cr₂N current collector, which has a capacity of 130 mAh g⁻¹ at a current density of 500 mA g⁻¹ after 100 cycles (Figure S9). Importantly, the AlCl₃-GB does not undergo an irreversible capacity loss in the first cycle, which is a problem inherent to all Li-ion batteries and is caused by solid-electrolyte interface formation.

In summary, titanium nitride (TiN) is an inexpensive current collector material that is easily fabricated from highly abundant elements and can be used in AlCl₃-GBs and other types of rechargeable batteries (Li-ion, Na-ion, Mg-ion, *etc.*). Although nearly all metals, including Au and Pt, are easily corroded by AlCl₃-based ionic liquids, TiN current collectors exhibit satisfactory corrosion resistance; in fact, their corrosion resistance is even higher than those of known alternatives (tungsten, molybdenum and glassy carbon). It was shown that a TiN current collector can be deposited on stainless steel and polyimide substrates for use in coin and pouch cells. The fabricated AlCl₃-GB with the TiN current collector exhibits a high power density of at least 4500 W kg⁻¹ and cyclability of at least 500 cycles. This work

demonstrates the feasibility of commercializing AlCl_3 -GBs for use as an inexpensive, grid-level energy storage technology.

Experimental Section

Chemicals and battery components: 1-Ethyl-3-methylimidazolium chloride ([EMIM]Cl, 99%, IoLiTec), AlCl_3 (99%, granules, Acros), Al foil (MTI Corporation), stainless steel (316S, Hohsen), a polyimide (Kapton), soda lime glass, W plates (MTI Corporation), glassy carbon plates (GC, Goodfellow), Cr targets (99.95%, Umicore), Ti targets (99.95%, Umicore), a glass microfiber separator (GF/D, Cat. No. 1823-257, Whatman), a polyvinylidene fluoride binder (PVDF, Aldrich) and *N*-methyl-2-pyrrolidone (NMP, Fischer) were used as received.

TiN and Cr_2N current collector fabrication: TiN and Cr_2N were deposited on stainless steel (316L, Hohsen Corp.), polyimide or soda lime glass substrates by pulsed DC magnetron sputtering using Ti and Cr targets, respectively, under an Ar/N_2 atmosphere (for TiN: $\text{Ar}:\text{N}_2$ ratio of 82.5:23 (sccm), pressure of 0.5 Pa; for Cr_2N : $\text{Ar}:\text{N}_2$ ratio of 12.5:7.5 (sccm), pressure of 0.3 Pa). Before each deposition, both the substrate and target were pre-sputtered for 5 (TiN) or 10 (Cr_2N) minutes in pure Ar, and the targets for the TiN and Cr_2N samples were subsequently poisoned under an 82.5:30 (sccm) or 3:18 (sccm) $\text{Ar}:\text{N}_2$ flow, respectively, for 5 minutes. The target power was set to 0.58 W cm^{-2} for TiN and 0.32 W cm^{-2} for Cr_2N , and the temperature was 200 °C and 300 °C for TiN and Cr_2N , respectively.

Four-point probe resistivity experiments: Four-point probe resistivity measurements of the coated soda lime glass substrates were performed using a NAGY SD-600 instrument. The error in the measured sheet resistance was less than 2%.

Temperature dependence of the TiN resistivity: To determine the TiN resistivity at different temperatures, gold contacts (200 nm thick) were deposited by thermal evaporation on the TiN (500 nm thick)/soda lime glass current collectors with the spacing shown in Figure S10. The gold (UBS) was evaporated at a pressure of 2×10^{-4} Pa and rate of 1.3 Å s^{-1} . The gold contact area was etched with a diamond tip to minimize edge effects. The samples were placed in a

temperature-controlled environment, and the resistance between each pair of contacts was determined from the I-V curves obtained by four-point probe measurements at a low pressure (800 Pa) in the temperature range -10 °C to 60 °C using a Keithley 2400 source meter. The sample resistance was obtained using the transmission line model; the data were fitted by linear regression at each temperature, as shown in Figure S11 (the slope is the sample resistance). The resistivity was then calculated by multiplying the resistance by the contact length (8 mm) and layer thickness (500 nm).

Characterization: SEM images were acquired using a Hitachi S-4800 FEG-SEM at a working voltage of 5 kV to minimize electrical charging of the layers. X-ray diffractograms were obtained using a PANalytical X'Pert PRO diffractometer with Cu K α radiation in a Bragg–Brentano configuration. X-ray photoelectron spectroscopy (XPS) measurements were performed using a monochromatic Al K α X-ray source (PHI Quantum 2000) at room temperature. The surveys and single scans were performed using pass energies of 117.4 eV and 29.35 eV, respectively. The atomic concentrations were determined using the MultiPak software. Cyclic voltammetry measurements of the TiN-coated polyimide, aluminum and stainless steel current collectors were performed on an MPG2 multichannel workstation (Bio-Logic).

Chloroaluminate ionic liquid preparation: The [EMIM]Cl-based ionic liquid was prepared by slowly mixing the solid [EMIM]Cl powder and AlCl₃ granules in an argon-filled glove box. During mixing, an isothermal reaction occurs to give a light-yellow liquid, which was subsequently treated with Al foil at 150 °C for 6 h until it was nearly colorless.

Graphite cathode preparation: Large commercial graphite flakes (0.2 g, grade 200, Graphene Supermarket) were placed in a 4-ml glass vial with 3.5 ml of ethanol and sonicated for 30 min (10% power) using a Sonopuls HD2200 ultrasonic homogenizer. Then, the sonicated kish graphite flakes were washed three times with ethanol and dried under vacuum at 80 °C for 12 h.

Assembly and testing of the AlCl_3 -graphite batteries: No binders or solvents were used to prepare the electrodes used in the coin and pouch type cell batteries. The graphitic material (10 mg over *ca.* 1 cm^2) was homogeneously distributed and pressed on the surface of TiN (Cr_2N)-coated stainless steel cap or TiN/polyimide current collector. Both the coin and pouch cells were assembled in an argon-filled glove box ($\text{O}_2 < 1 \text{ ppm}$, $\text{H}_2\text{O} < 1 \text{ ppm}$) using a glass fiber separator soaked with AlCl_3 -[EMIM]Cl. Aluminum foil was used as both the reference and counter electrodes. These cells were cycled between 0.01–2.415 V on an MPG2 multichannel workstation (Bio-Logic). A CCCV protocol was used at voltages of 1.92 V and 2.07 V until the current decreased to 10% of the initial value.

Supporting Information

Supporting Information is available from the Wiley Online Library or from the author.

Acknowledgements

This work was financially supported by the Swiss National Science Foundation (SNF Ambizione Energy grant, Grant No. PZENP2_154287), the Swiss Federal Commission for Technology and Innovation (CTI) through the Swiss Competence Centers for Energy Research (SCCER, “Heat and Electricity Storage”) and the Competence Center for Energy and Mobility (CCEM, Project SLIB). The authors thank Sebastian Wagner for help with the photography. The SEM images were obtained at the Empa Electron Microscopy Center.

Received: ((will be filled in by the editorial staff))

Revised: ((will be filled in by the editorial staff))

Published online: ((will be filled in by the editorial staff))

References

- [1] M. Pacesila, S. G. Burcea, S. E. Colesca, *Renewable Sustainable Energy Rev.* **2016**, *56*, 156.
- [2] S. Weitemeyer, D. Kleinhans, T. Vogt, C. Agert, *Renewable Energy* **2015**, *75*, 14.
- [3] H. Chen, T. N. Cong, W. Yang, C. Tan, Y. Li, Y. Ding, *Prog. Nat. Sci.* **2009**, *19*, 291.
- [4] C. Grosjean, P. H. Miranda, M. Perrin, P. Poggi, *Renewable and Sustainable Energy Reviews* **2012**, *16*, 1735.

- [5] N. Nitta, F. Wu, J. T. Lee, G. Yushin, *Materials Today* **2015**, *18*, 252.
- [6] N. Yabuuchi, K. Kubota, M. Dahbi, S. Komaba, *Chem. Rev.* **2014**, *114*, 11636.
- [7] V. L. Chevrier, G. Ceder, *J. Electrochem. Soc.* **2011**, *158*, A1011.
- [8] M. D. Slater, D. Kim, E. Lee, C. S. Johnson, *Adv. Funct. Mater.* **2013**, *23*, 947.
- [9] V. Palomares, P. Serras, I. Villaluenga, K. B. Hueso, J. Carretero-Gonzalez, T. Rojo, *Energy Environ. Sci.* **2012**, *5*, 5884.
- [10] Y. Wang, R. Chen, T. Chen, H. Lv, G. Zhu, L. Ma, C. Wang, Z. Jin, J. Liu, *Energy Storage Mater.* **2016**, *4*, 103.
- [11] L. P. Wang, L. Yu, X. Wang, M. Srinivasan, Z. J. Xu, *J. Mater. Chem. A* **2015**, *3*, 9353.
- [12] B. L. Ellis, L. F. Nazar, *Curr. Opin. Solid State Mater. Sci.* **2012**, *16*, 168.
- [13] K. Kubota, S. Komaba, *J. Electrochem. Soc.* **2015**, *162*, A2538.
- [14] J. Billaud, R. J. Clément, A. R. Armstrong, J. Canales-Vázquez, P. Rozier, C. P. Grey, P. G. Bruce, *J. Am. Chem. Soc.* **2014**, *136*, 17243.
- [15] J. Billaud, G. Singh, A. R. Armstrong, E. Gonzalo, V. Roddatis, M. Armand, T. Rojo, P. G. Bruce, *Energy Environ. Sci.* **2014**, *7*, 1387.
- [16] G. Singh, N. Tapia-Ruiz, J. M. Lopez del Amo, U. Maitra, J. W. Somerville, A. R. Armstrong, J. Martinez de Ilarduya, T. Rojo, P. G. Bruce, *Chem. Mater.* **2016**, *28*, 5087.
- [17] L. O. Vogt, C. Marino, C. Villevieille, *Chimia* **2015**, *69*, 729.
- [18] M. He, M. Walter, K. V. Kravchyk, R. Erni, R. Widmer, M. V. Kovalenko, *Nanoscale* **2015**, *7*, 455.
- [19] M. Walter, M. I. Bodnarchuk, K. V. Kravchyk, M. V. Kovalenko, *Chimia* **2015**, *69*, 724.
- [20] A. Eftekhari, Z. Jian, X. Ji, *ACS Appl. Mater. Interfaces* **2017**, *9*, 4404.
- [21] L. Xue, Y. Li, H. Gao, W. Zhou, X. Lü, W. Kaveevivitchai, A. Manthiram, J. B. Goodenough, *J. Am. Chem. Soc.* **2017**, *139*, 2164.

- [22] B. Ji, F. Zhang, X. Song, Y. Tang, *Adv. Mater.* **2017**, *29*, 1700519.
- [23] A. P. Cohn, N. Muralidharan, R. Carter, K. Share, L. Oakes, C. L. Pint, *J. Mater. Chem. A* **2016**, *4*, 14954.
- [24] W. Luo, J. Wan, B. Ozdemir, W. Bao, Y. Chen, J. Dai, H. Lin, Y. Xu, F. Gu, V. Barone, L. Hu, *Nano Lett.* **2015**, *15*, 7671.
- [25] A. Ponrouch, C. Frontera, F. Barde, M. R. Palacin, *Nat. Mater.* **2016**, *15*, 169.
- [26] T. Tojo, Y. Sugiura, R. Inada, Y. Sakurai, *Electrochim. Acta* **2016**, *207*, 22.
- [27] A. L. Lipson, B. Pan, S. H. Lapidus, C. Liao, J. T. Vaughey, B. J. Ingram, *Chem. Mater.* **2015**, *27*, 8442.
- [28] A. Ponrouch, D. Tchitchekova, C. Frontera, F. Bardé, M. E. Arroyo-de Dompablo, M. R. Palacin, *Electrochem. Commun.* **2016**, *66*, 75.
- [29] D. Aurbach, Z. Lu, A. Schechter, Y. Gofer, H. Gizbar, R. Turgeman, Y. Cohen, M. Moshkovich, E. Levi, *Nature* **2000**, *407*, 724.
- [30] J. Muldoon, C. B. Bucur, T. Gregory, *Chem. Rev.* **2014**, *114*, 11683.
- [31] M. Walter, K. V. Kravchyk, M. Ibáñez, M. V. Kovalenko, *Chem. Mater.* **2015**, *27*, 7452.
- [32] B. Pan, J. Huang, Z. Feng, L. Zeng, M. He, L. Zhang, J. T. Vaughey, M. J. Bedzyk, P. Fenter, Z. Zhang, A. K. Burrell, C. Liao, *Adv. Energy Mater.* **2016**, *6*, 1600140.
- [33] M.-C. Lin, M. Gong, B. Lu, Y. Wu, D.-Y. Wang, M. Guan, M. Angell, C. Chen, J. Yang, B.-J. Hwang, H. Dai, *Nature* **2015**, *520*, 324.
- [34] S. K. Das, S. Mahapatra, H. Lahan, *J. Mater. Chem. A* **2017**, *5*, 6347.
- [35] F. Ambroz, T. J. Macdonald, T. Nann, *Adv. Energy Mater.* **2017**, 1602093.
- [36] Z. A. Zafar, S. Imtiaz, R. Razaq, S. Ji, T. Huang, Z. Zhang, Y. Huang, J. A. Anderson, *J. Mater. Chem. A* **2017**, *5*, 5646.
- [37] L. Fu, N. Li, Y. Liu, W. Wang, Y. Zhu, Y. Wu, *Chin. J. Chem.* **2017**, *35*, 13.
- [38] N. S. Hudak, *J. Phys. Chem. C* **2014**, *118*, 5203.

- [39] N. P. Stadie, S. Wang, K. V. Kravchyk, M. V. Kovalenko, *ACS Nano* **2017**, *11*, 1911.
- [40] M. Angell, C.-J. Pan, Y. Rong, C. Yuan, M.-C. Lin, B.-J. Hwang, H. Dai, *Proc. Natl. Acad. Sci. U. S. A.* **2017**, *114*, 834.
- [41] K. V. Kravchyk, S. Wang, L. Piveteau, M. V. Kovalenko, *Chem. Mater.* **2017**, *29*, 4484.
- [42] S. Wang, K. V. Kravchyk, F. Krumeich, M. V. Kovalenko, *ACS Appl. Mater. Interfaces* **2017**, *9*, 28478.
- [43] Y. Wu, M. Gong, M.-C. Lin, C. Yuan, M. Angell, L. Huang, D.-Y. Wang, X. Zhang, J. Yang, B.-J. Hwang, H. Dai, *Adv. Mater.* **2016**, *28*, 9218.
- [44] X. Yu, B. Wang, D. Gong, Z. Xu, B. Lu, *Adv. Mater.* **2017**, *29*, 1604118.
- [45] H. Chen, F. Guo, Y. Liu, T. Huang, B. Zheng, N. Ananth, Z. Xu, W. Gao, C. Gao, *Adv. Mater.* **2017**, *29*, 1605958.
- [46] G. Y. Yang, L. Chen, P. Jiang, Z. Y. Guo, W. Wang, Z. P. Liu, *RSC Adv.* **2016**, *6*, 47655.
- [47] L. Zhang, L. Chen, H. Luo, X. Zhou, Z. Liu, *Adv. Energy Mater.* **2017**, 1700034.
- [48] S. Jiao, H. Lei, J. Tu, J. Zhu, J. Wang, X. Mao, *Carbon* **2016**, *109*, 276.
- [49] H. Sun, W. Wang, Z. Yu, Y. Yuan, S. Wang, S. Jiao, *Chem. Commun.* **2015**, *51*, 11892.
- [50] Y. Song, S. Jiao, J. Tu, J. Wang, Y. Liu, H. Jiao, X. Mao, Z. Guo, D. J. Fray, *J. Mater. Chem. A* **2017**, *5*, 1282.
- [51] W. M. Haynes, *CRC Press/Taylor & Francis*, **2017**.
- [52] H. O. Pierson, in *Handbook of Refractory Carbides and Nitrides*, William Andrew Publishing, Westwood, NJ 1996, 181.
- [53] R. A. Fischer, H. Parala, in *Chemical Vapour Deposition: Precursors, Processes and Applications*, The Royal Society of Chemistry, 2009, 413.

- [54] T. Jiang, M. J. Chollier Brym, G. Dubé, A. Lasia, G. M. Brisard, *Surf. Coat. Technol.* **2006**, *201*, 1.
- [55] B. Siemensmeyer, K. Bade, J. W. Schultze, *Ber. Bunsenges. Physik. Chem.* **1991**, *95*, 1461.
- [56] W. Schmickler, J. W. Schultze, *Ber. Bunsenges. Physik. Chem.* **1992**, *96*, 760.
- [57] M. N. Solovan, V. V. Brus, E. V. Maistruk, P. D. Maryanchuk, *Inorg. Mater.* **2014**, *50*, 40.
- [58] H. O. Pierson, in *Handbook of Carbon, Graphite, Diamonds and Fullerenes*, William Andrew Publishing, Oxford 1993, 43.
- [59] N. Deprez, D. S. McLachlan, *J. Phys. D: Appl. Phys.* **1988**, *21*, 101.

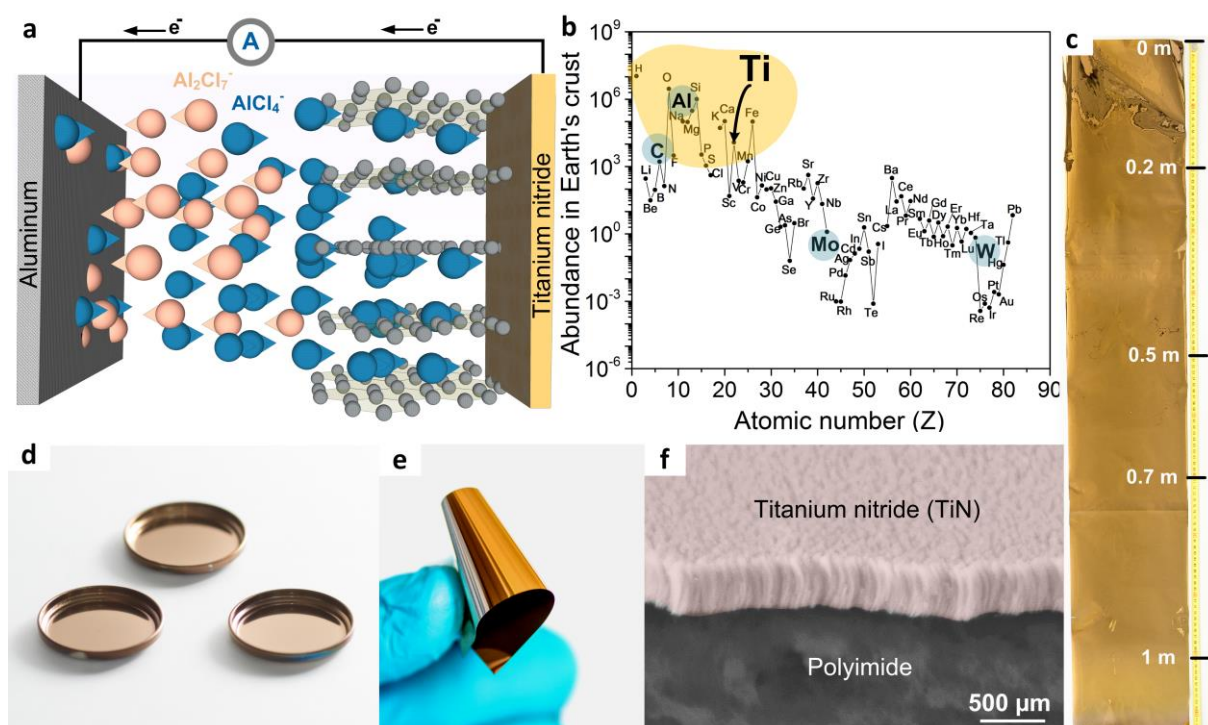


Figure 1. Aluminum chloride-graphite battery with a TiN current collector. (a) Schematic of the charging process. (b) Element abundances in the Earth's crust (normalized per 10^6 atoms of Si) (the yellow region indicates rock-forming elements) (adapted from Ref. ^[51]). (c, d, e) Photographs of the TiN-coated (500 nm film thickness) polyimide (c, e) and stainless-steel (d) substrates. (f) Cross-sectional SEM image of TiN deposited on the polyimide substrate.

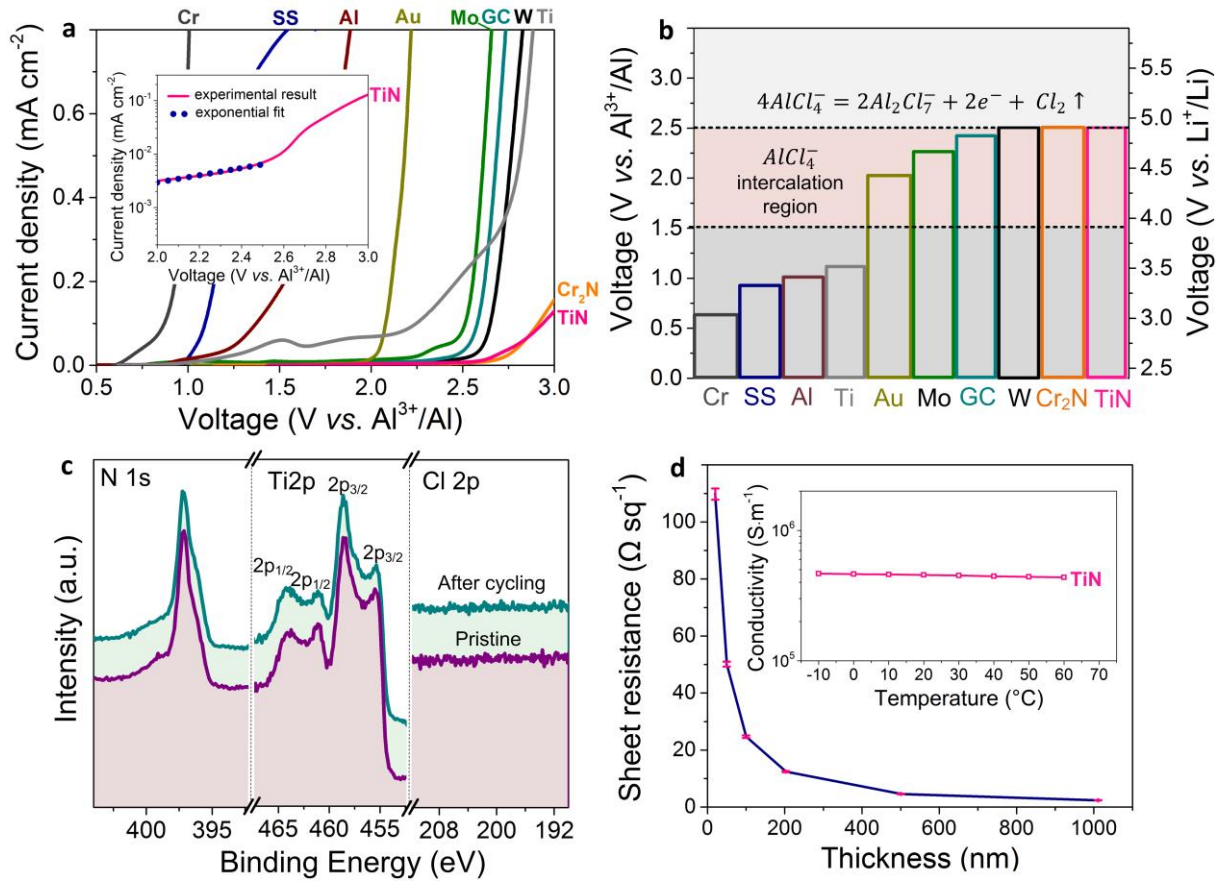


Figure 2. (a) Cyclic voltammetry curves for various current collectors measured in AlCl₃-[EMIM]Cl ($r = 2$) at a rate of 10 mV s⁻¹ (inset: current-potential relationship of the TiN current collector on a logarithmic scale). (b) Illustration of the oxidative stabilities of various current collector materials in AlCl₃-[EMIM]Cl ($r = 2$) in terms of the voltage vs. Al³⁺/Al and Li⁺/Li. (c) XPS data before and after cyclic voltammetry measurements of the TiN current collector in AlCl₃-[EMIM]Cl ($r = 2$, 1000 cycles within the range of 1-2.5 V vs. Al³⁺/Al). (d) Dependence of the TiN sheet resistance, which was measured by a four-point probe technique at 25 °C, on the film thickness (inset: temperature dependence of the TiN electrical conductivity).

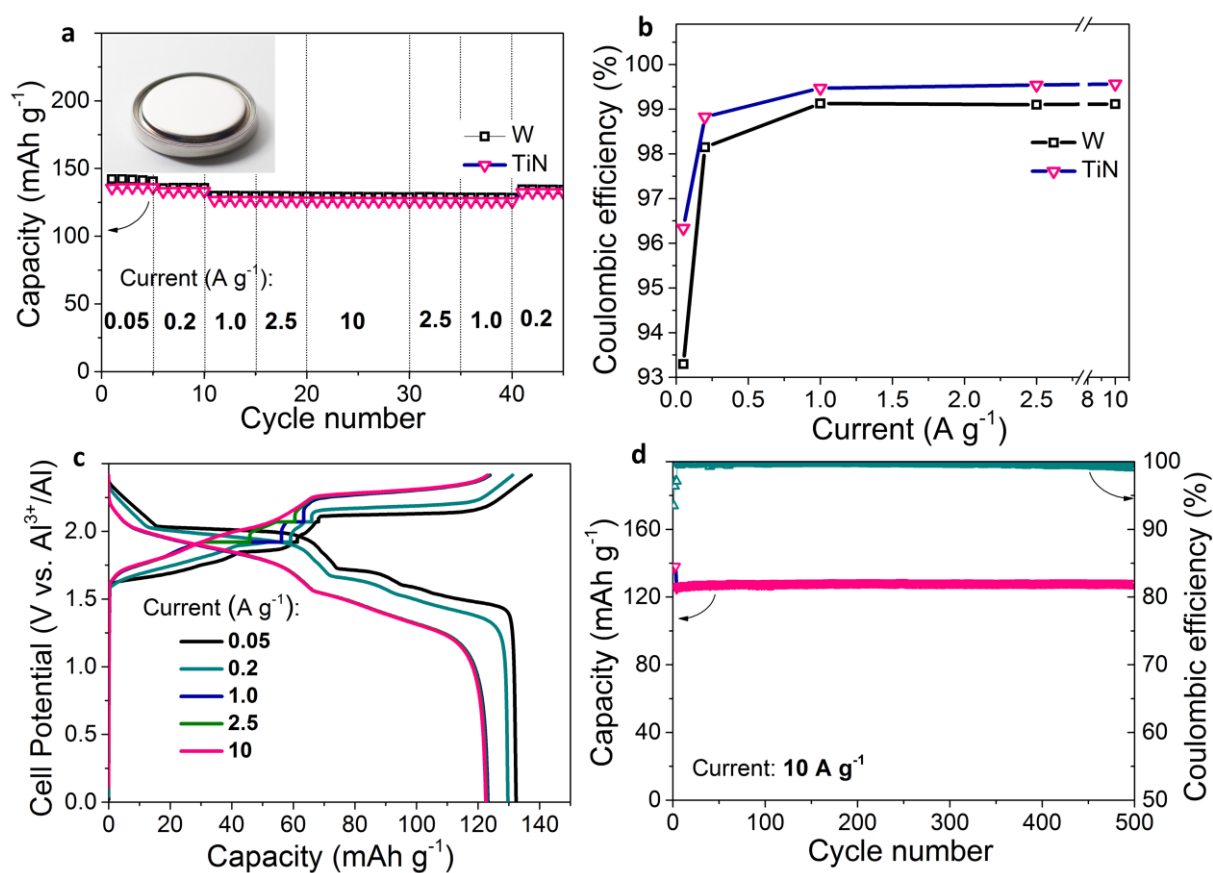


Figure 3. Electrochemical performance of kish graphite flakes in a coin cell with a TiN current collector. The inner surface of the casing at the cathode was coated with TiN (see **Figure 1d**). (a) Rate capabilities, (b) coulombic efficiencies and (c) galvanostatic charge-discharge voltage curves measured by a CCCV protocol at various current densities (0.05-10 A g^{-1}) in AlCl_3 -[EMIM]Cl ($r = 2$) (inset in (a): photograph of a coin cell with a TiN current collector). (d) Cyclability of kish graphite flakes measured by a CCCV protocol at 10 A g^{-1} .

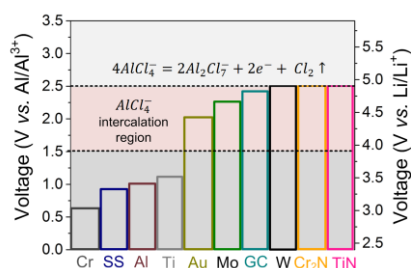
Inexpensive flexible TiN current collectors based on earth-abundant elements are fabricated for use in aluminum chloride-graphite batteries (AlCl₃-GBs). The fabricated AlCl₃-GB exhibited outstanding performance with a high power density of 4500 W kg⁻¹, coulombic efficiency of ~ 99.5% and cyclability of at least 500 cycles.

Keywords: Aluminum chloride-graphite battery, titanium nitride, current collector, graphite, energy density.

Shutao Wang,^{†,‡,‡,‡} Kostiantyn V. Kravchyk,^{†,‡,‡,‡} Alejandro N. Filippin,^{‡,‡,‡} Ulrich Müller,^{‡,‡} Ayodhya N. Tiwari,[‡] Stephan Buecheler,[‡] Maryna I. Bodnarchuk,[‡] and Maksym V. Kovalenko^{*,†,‡}

Aluminum Chloride-graphite Batteries with Flexible Current Collectors Prepared from Earth-abundant Elements

ToC figure



Supporting Information

Aluminum Chloride-graphite Batteries with Flexible Current Collectors Prepared from Earth-abundant Elements

Shutao Wang,^{†,‡,#} Kostiantyn V. Kravchyk,^{†,‡,#} Alejandro N. Filippin,^{‡,#} Ulrich Müller,[‡] Ayodhya N. Tiwari,[‡] Stephan Buecheler,[‡] Maryna I. Bodnarchuk,[‡] and Maksym V. Kovalenko^{,†,‡}*

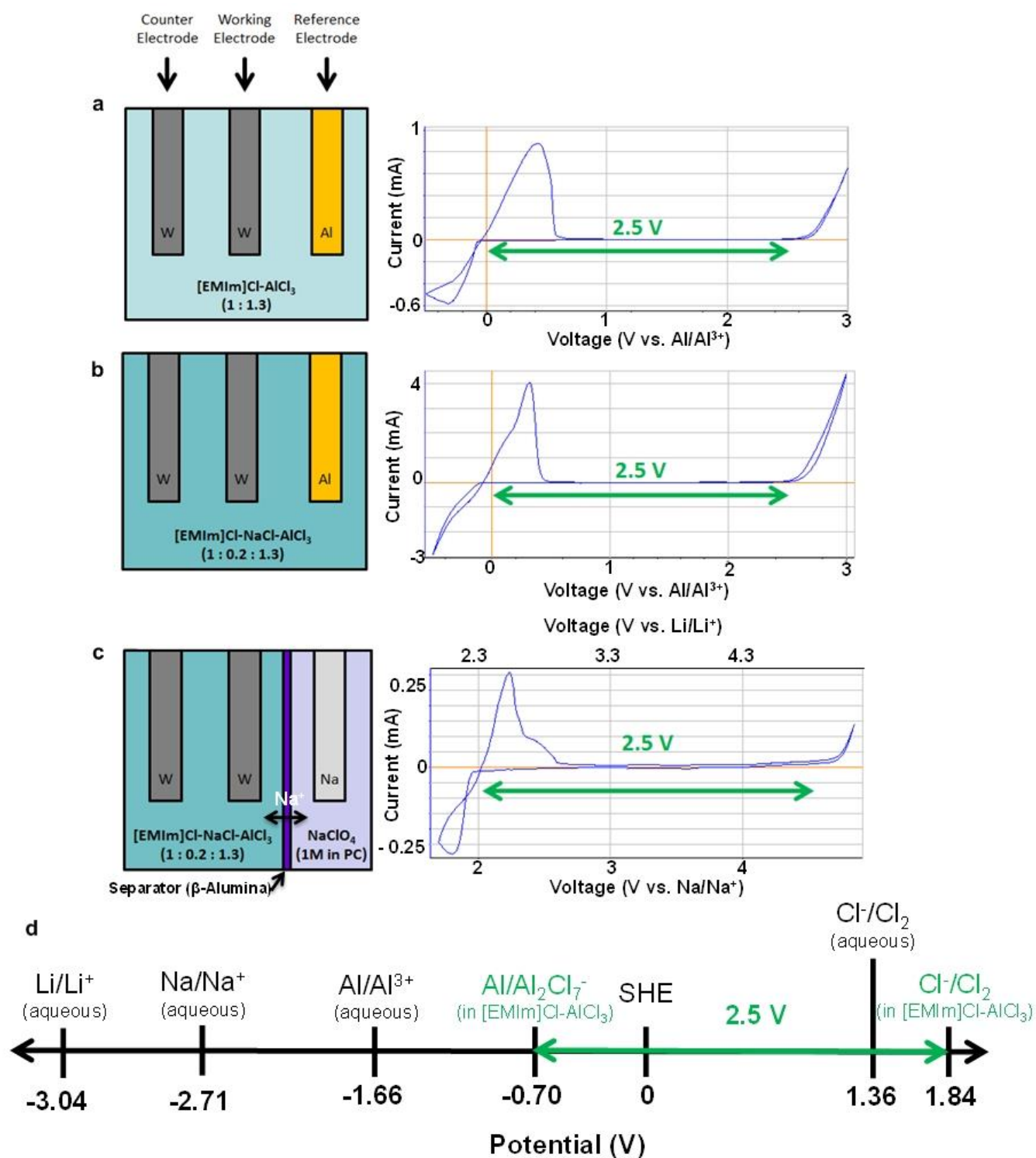


Figure S1. Three-electrode cyclic voltammetry measurements of aluminum stripping/electroplating in (a) AlCl₃:EMIMCl (1:1.3 mol. ratio) ionic liquid; (b) AlCl₃:NaCl:EMIMCl (1:0.2:1.3 mol. ratio) ionic liquid; (c) AlCl₃:NaCl:EMIMCl (1:0.2:1.3 mol. ratio) ionic liquid and Na electrolyte (1M NaClO₄ in PC). (d) Schematic of electrochemical window of AlCl₃:EMIMCl (1:1.3 mol. ratio) ionic liquid, referenced to standard hydrogen electrode. Aqueous standard electrode potentials of Li, Na, and Al are indicated for comparison, highlighting high electrode potentials involved into operation of the Al battery.

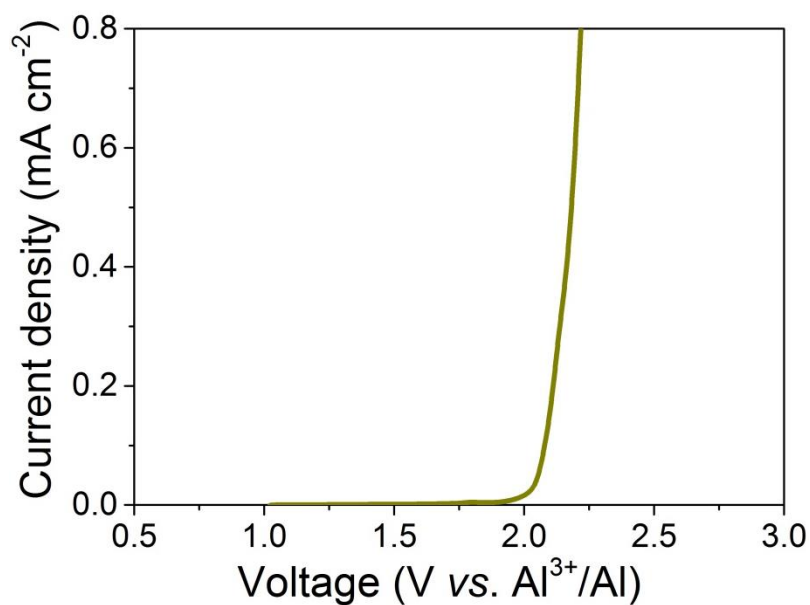


Figure S2. Cyclic voltammetry curve of Au current collector measured in AlCl₃:EMIMCl ionic liquid ($r = 2$) at a speed of 10 mV s⁻¹.

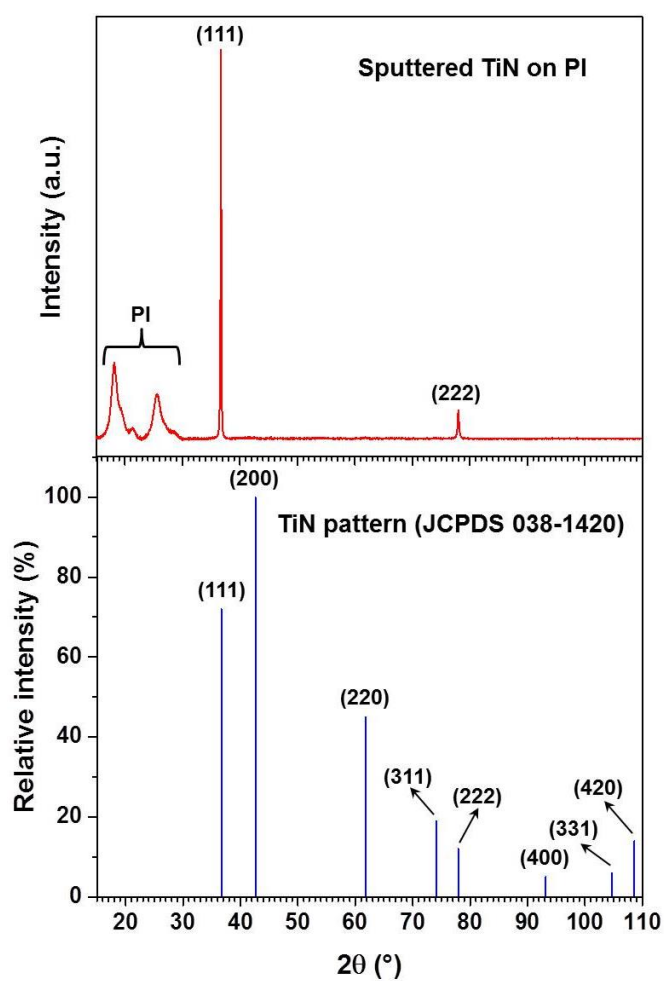


Figure S3. XRD patterns of TiN (1 μm thick) deposited on polyimide substrate (PI).

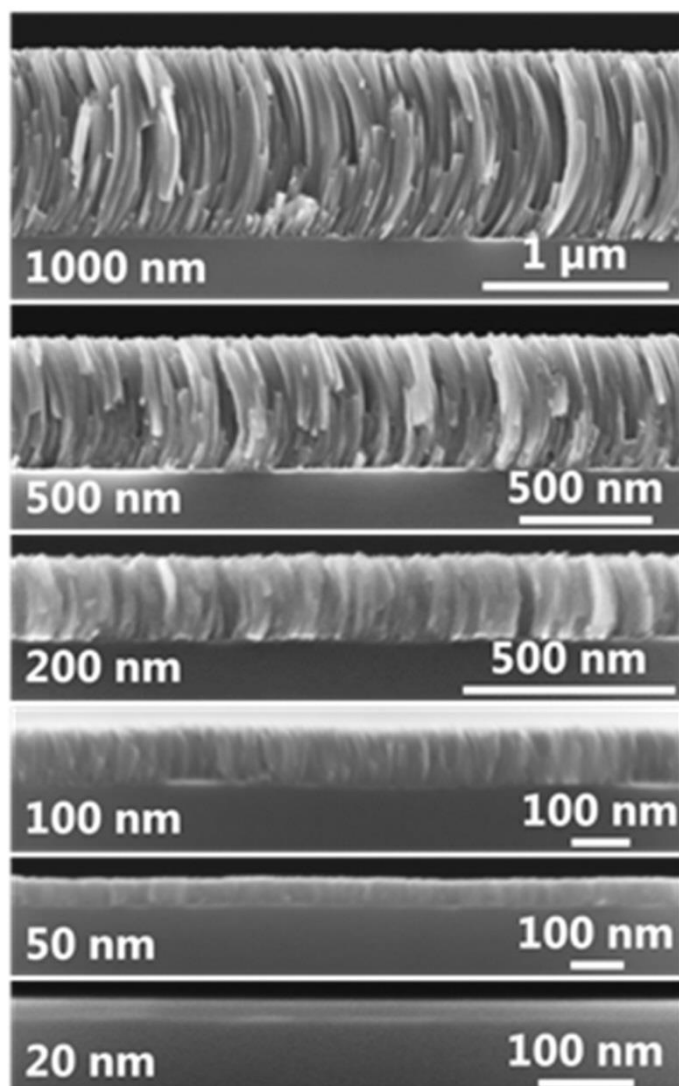


Figure S4. SEM cross section of TiN prepared by reactive magnetron sputtering on Si substrate.

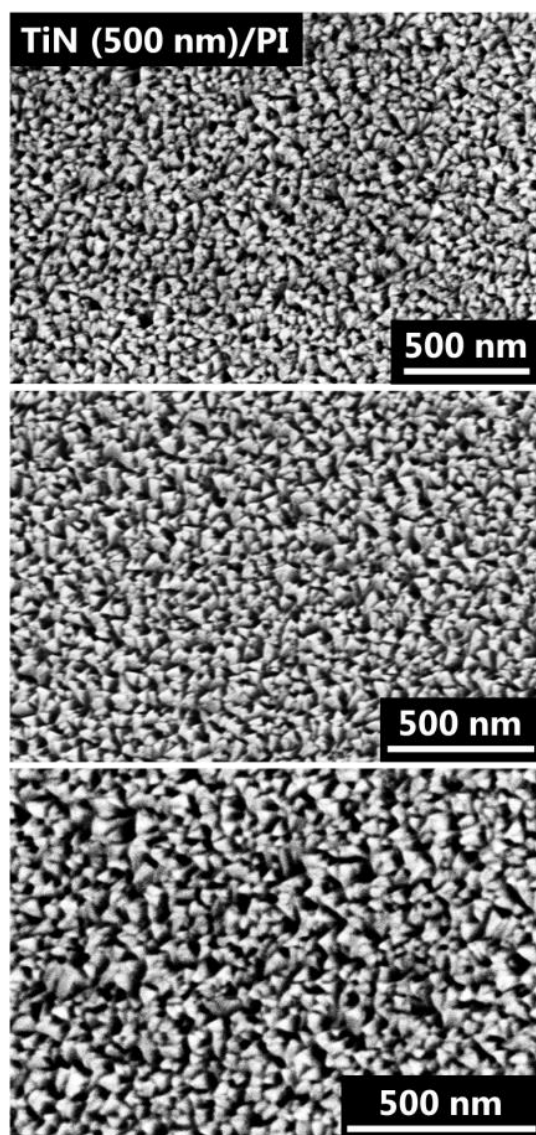


Figure S5. SEM images of TiN surface at different magnifications deposited onto polyimide substrate. Although the films are rough, they exhibit no pin holes or cracks.

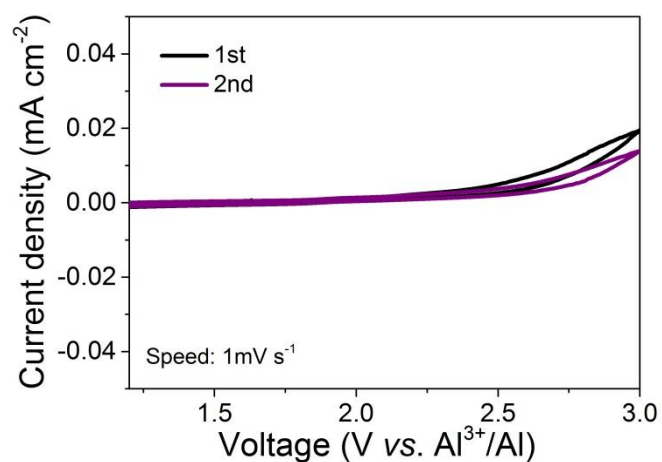


Figure S6. Cyclic voltammetry measurements of TiN current collector in AlCl₃-EMIMCl ionic liquid electrolyte ($r = 2$) using speed of 1 mV s⁻¹.

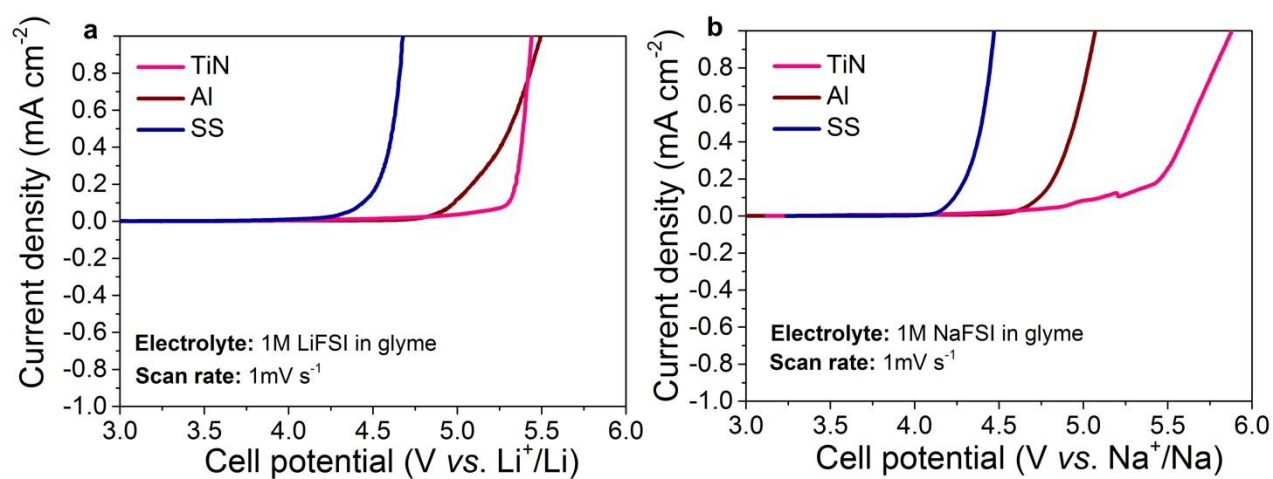


Figure S7. Cyclic voltammetry measurements of TiN, aluminum and stainless steel (316L) current collectors in (a) 1M LiFSI and (b) 1M NaFSI glyme based electrolytes.

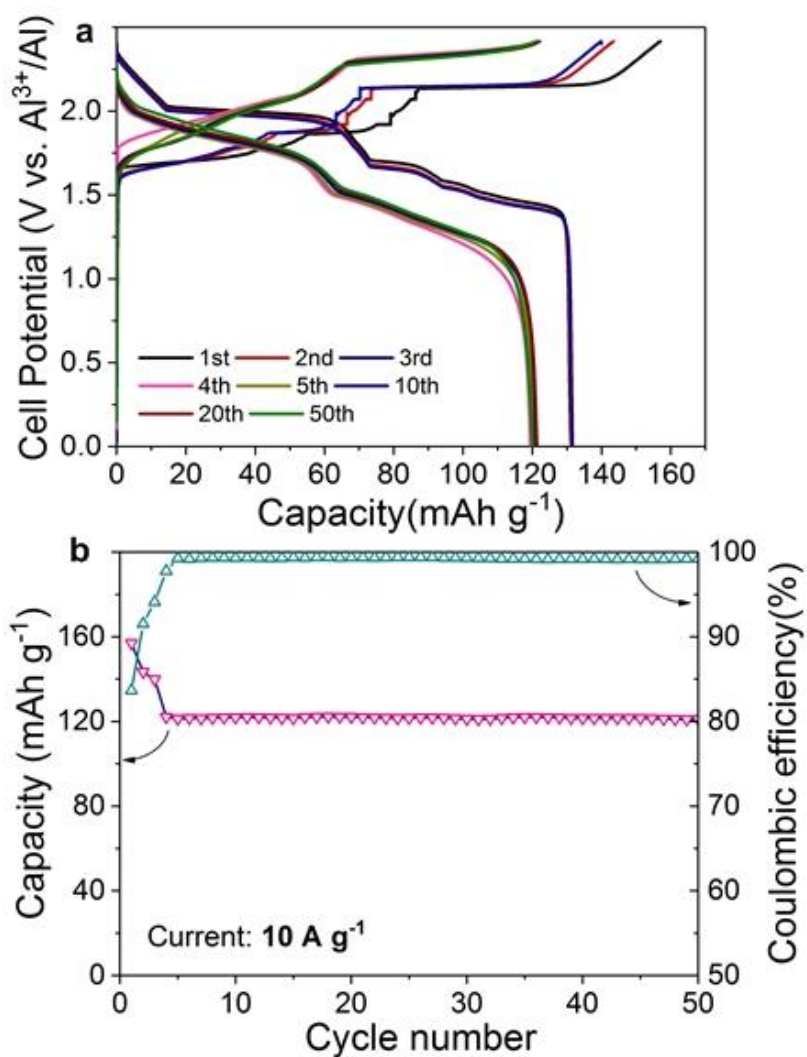


Figure S8. Electrochemical performance of kish graphite flakes in a pouch-type cell with a TiN current collector. (a) Galvanostatic charge-discharge voltage curves measured by a CCCV protocol at 50 mA g^{-1} (for first three cycles) and at 10 A g^{-1} (for the following cycles) in $\text{AlCl}_3\text{-[EMIM]Cl}$ ($r = 2$). (b) Cyclability of kish graphite flakes measured by a CCCV protocol at 10 A g^{-1} (first three cycles were measured at 50 mA g^{-1}).

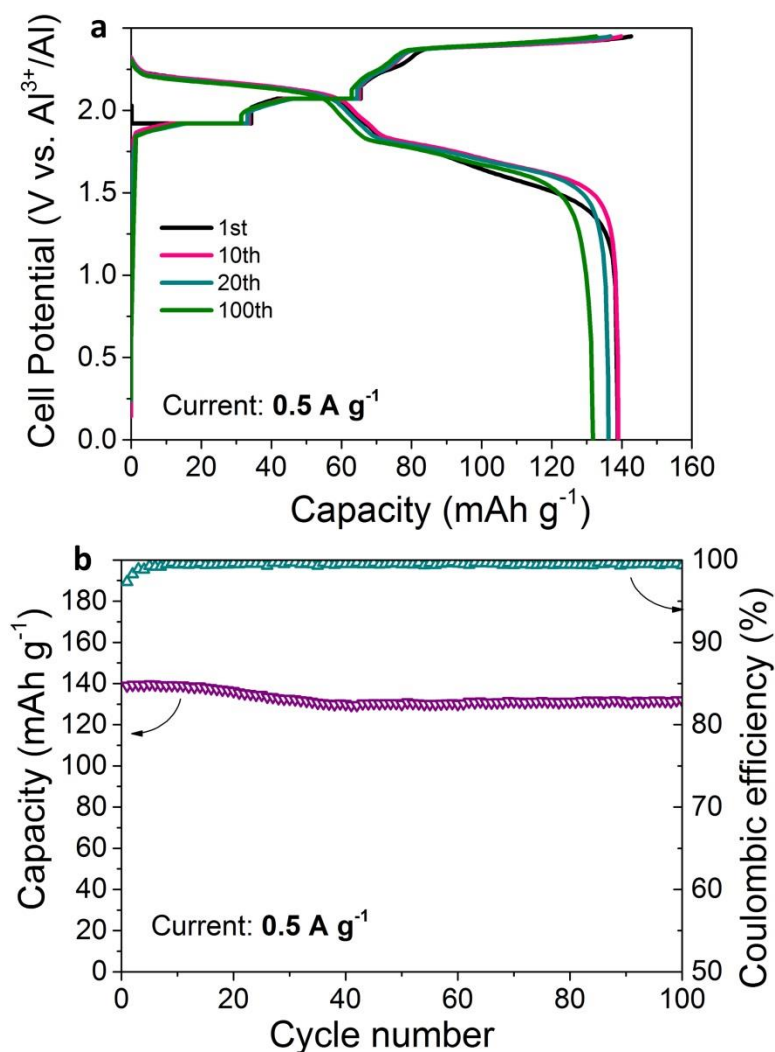


Figure S9. Electrochemical performance of kish graphite flakes in coin-type cell configuration with Cr_2N current collector. (a, b) Galvanostatic charge-discharge voltage curves and cyclic stability of kish graphite flakes measured with CCCV protocol at 0.5 A g^{-1} using $\text{AlCl}_3/\text{EMIMCl}$ ionic liquid ($r = 1.3$).

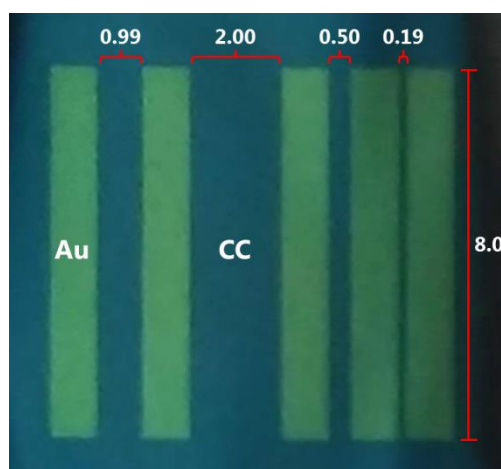


Figure S10. Photograph of 200 nm gold contacts deposited onto TiN (500nm thick, distances are expressed in mm).

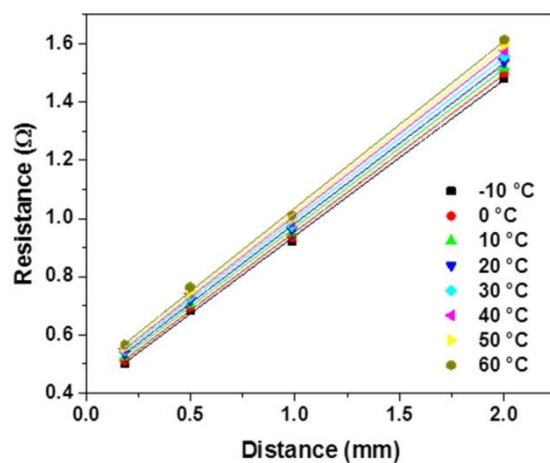


Figure S11. Electrical resistance vs. distance for TiN (500nm thick) in the temperature range $-10\text{ }^{\circ}\text{C}$ to $60\text{ }^{\circ}\text{C}$.