

SUPPORTING INFORMATION

ANTIMICROBIAL FUNCTIONALIZATION OF SURFACES BY A CHIMERIC ADHESIVE PROTEIN

Rossana Pitocchi^a, Anna Pennacchio^a, Flavia Zuber^b, Qun Ren^b, Eugenio Notomista^c, Silvia Campioni^d, Gustav Nyström^d, Paola Giardina^a, Alessandra Piscitelli^{a}.*

AUTHOR ADDRESS

^aDepartment of Chemical Sciences, University of Naples Federico II, 80126 Napoli, Italy

^bLaboratories of Biotechnologies, Empa, 9014 St. Gallen, Switzerland

^cDepartment of Biology, University of Naples Federico II, 80126 Napoli, Italy

^dLaboratory for Cellulose and Wood Materials, Empa, 8600 Dübendorf, Switzerland

Corresponding Author

*Alessandra Piscitelli, apiscite@unina.it . Department of Chemical Sciences, University of Naples Federico II, Napoli, Italy

SUPPORTING INFORMATION.

2 tables

6 figures

Table S1. Immobilization yield of Vmh2-GKY20 on polystyrene multiwell.

Amount of deposited protein (μg)	Amount of bounded protein (μg)	Immobilization yield(%)
10	5\pm1	54\pm9
20	12\pm1	58\pm4
30	16\pm1	53\pm3

Table S2. Immobilization yield of Vmh2-GKY20 on polystyrene multiwell doubling protein deposition.

Deposition	Amount of deposited protein (μg)	Amount of bounded protein (μg)	Immobilization yield(%)
first	10	4 \pm 1	
second	10	7 \pm 1	
total	20	11\pm1	53\pm6
first	20	10 \pm 1	
second	20	14 \pm 1	
total	40	24\pm1	60\pm3
first	30	11 \pm 1	
second	30	21 \pm 1	
total	60	32\pm2	52\pm4

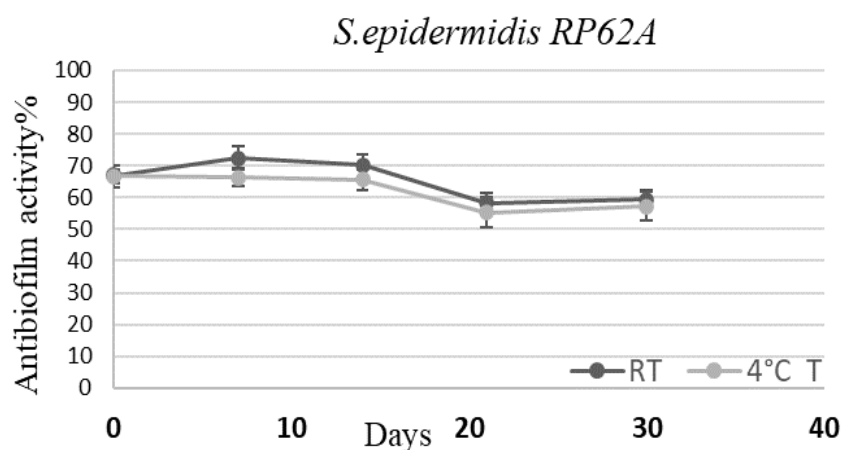


Figure S1: Antibiofilm activity, estimated by crystal violet assays, against *S. epidermidis* tested every 8 days within 4 weeks, on plates functionalized with Vmh2-GKY20 and stored at 4 °C and room temperature (RT).

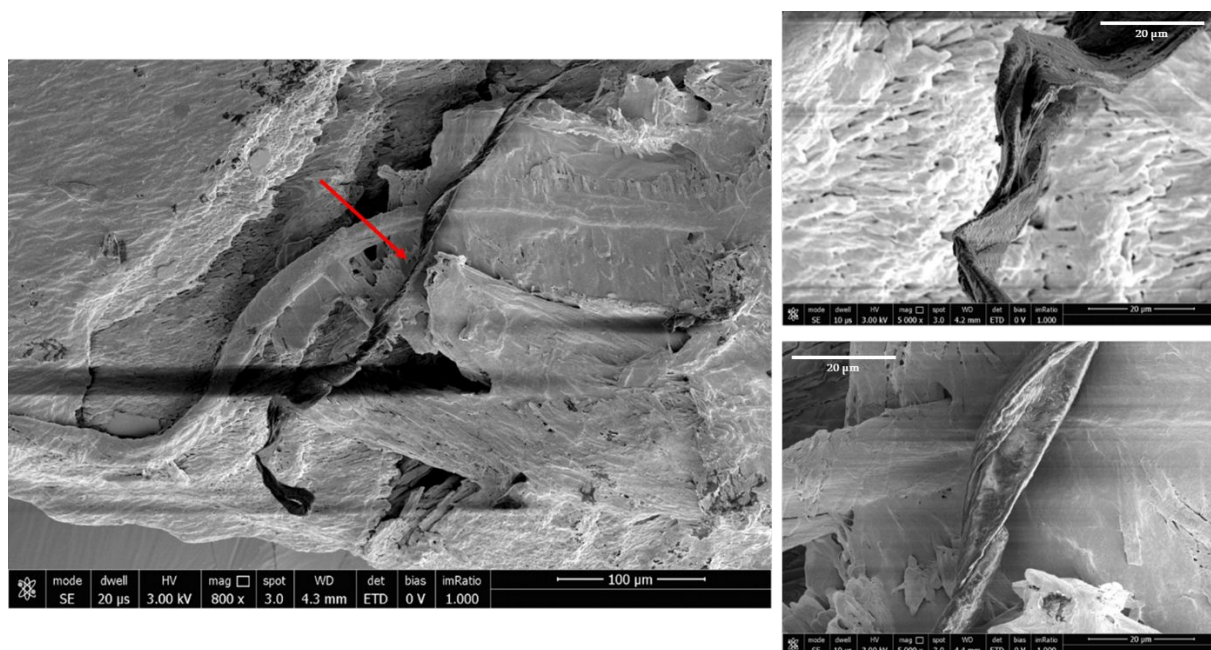


Figure S2: SEM images of Vmh2-GKY20 fibrils formed on BCps functionalized using the 7 μ M protein solution. The red arrow points to the fibril observed, and two different details of the fibril, at different magnifications are reported on the right.

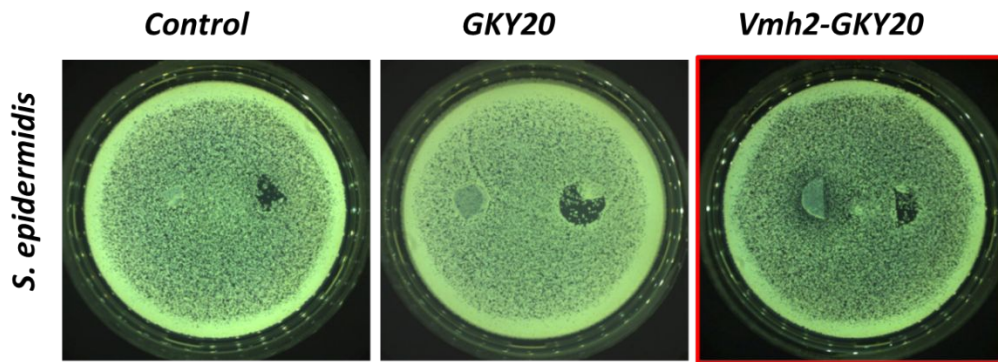


Figure S3: Diffusion (left) and touch (right) assays against *S. epidermidis* for BCPs functionalized with the fusion protein and the peptide GKY20, using the same initial molar concentration 14 μ M. Control is untreated BCps.

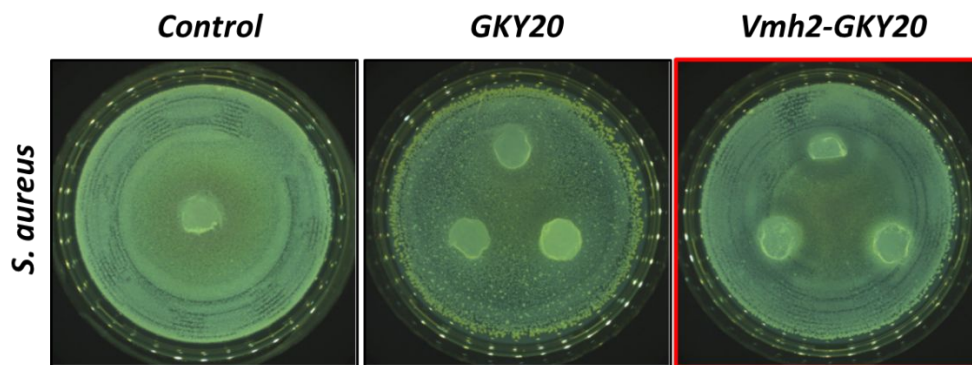


Figure S4: Diffusion assays against *S. aureus* for BCPs functionalized with fusion protein and the peptide GKY20, using the same initial molar concentration, 14 μ M. Control is untreated BCps.

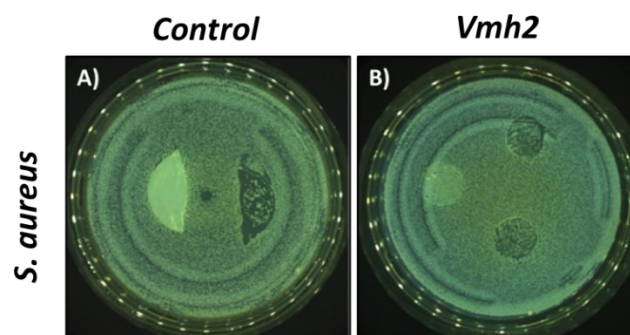


Figure S5: Diffusion and touch tests against *S. aureus* for untreated BCp (A) and those functionalized with 14 μ M of native Vmh2 (B). Samples on the left, diffusion test; samples on the right, touch test.

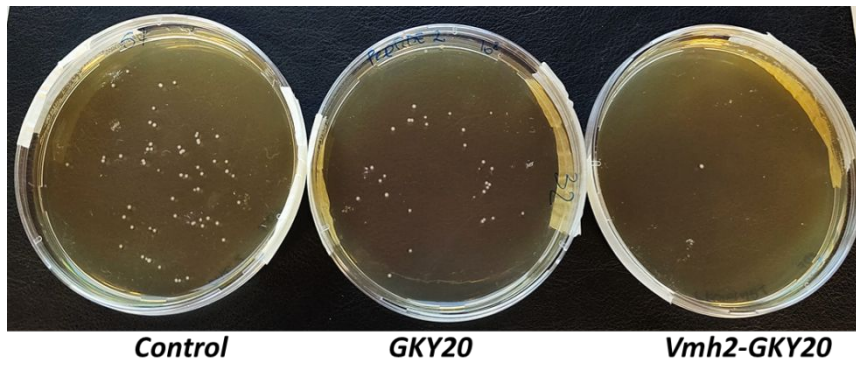


Figure S6: Cell viability of *S. epidermidis* grown in the presence of untreated BCps (control), BCps functionalized with GKY20 and the chimeric protein Vmh2-GKY20.