

Supplementary material

Selective browsing behaviour of ungulates influences the growth of *Abies alba* differently depending on forest type

Andrea Doris Kupferschmid

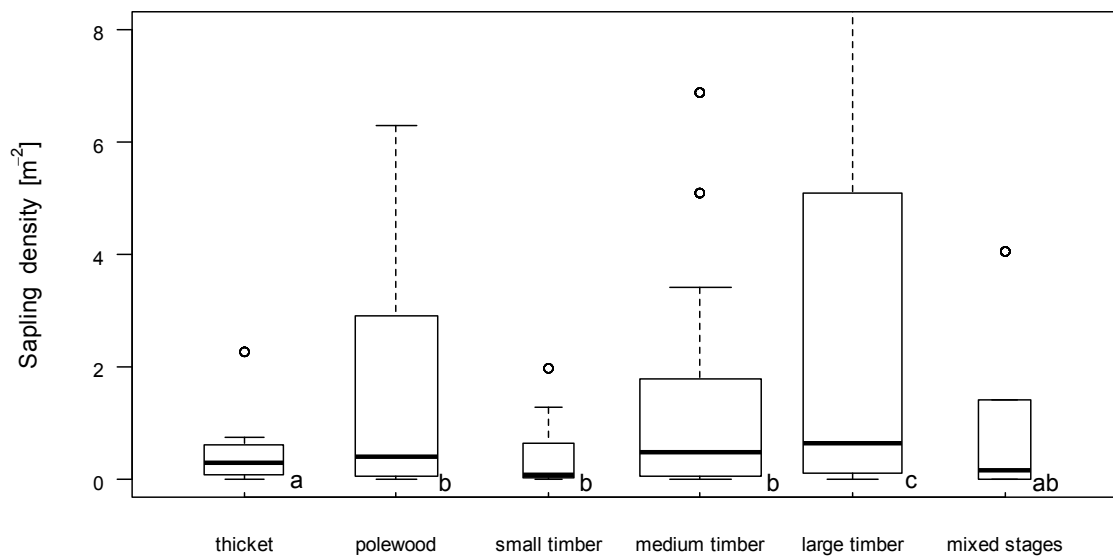


Fig. S1 *Abies alba* sapling density per square meter in plots that contained *Abies* regeneration in relation to stand developmental stage. Only the 18 sites with data collected in spring were used. Letters refer to significant differences at $P = 0.01$ between the developmental stages in the pairwise t tests. Median (bold line), first and third quartile (bottom and top of the box) with whiskers at quartile $\pm 1.5 \cdot$ interquartile range and individual points more extreme in value (circles) have been drawn using *boxplot* in default R code. Extreme outliers were omitted for appropriate scaling. The width of the boxes represents the number of trees within the factor categories.

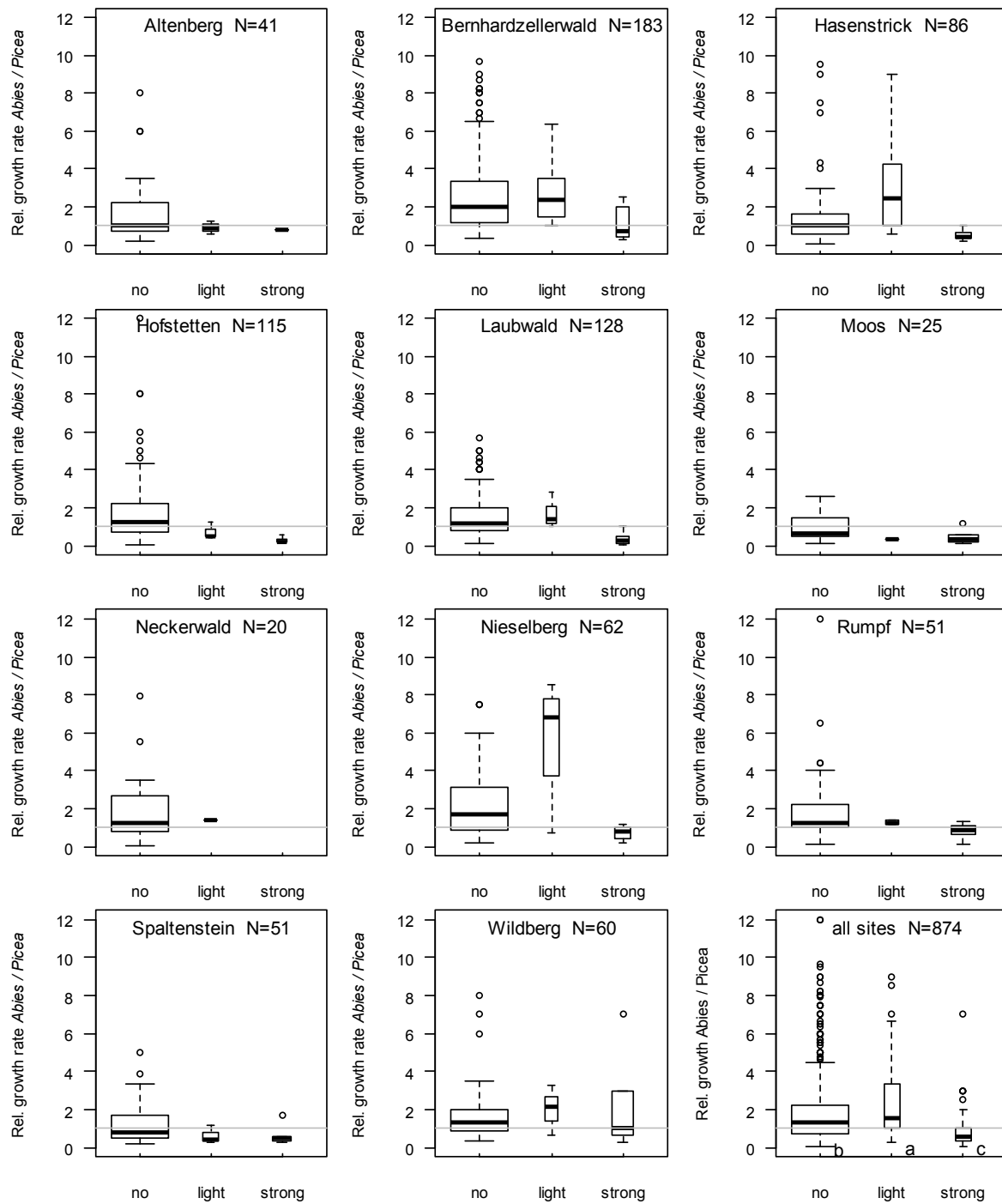


Fig. S2 Ratio of relative growth rate of *Abies alba* saplings to relative growth rate of *Picea abies* saplings of the same height class from the same plot in relation to *Abies alba* within-tree browsing intensity (no, light or strong browsing on leader shoot) for each site with more than 20 pairs of *Abies-Picea*. N = the number of pairs within each site. Grey lines indicate equal growth of *Abies* and *Picea* saplings in the plot.